

SCAN PROBLEM – AUTOMATICALLY UPDATE WINDOWS 7,8,10

1st STEP

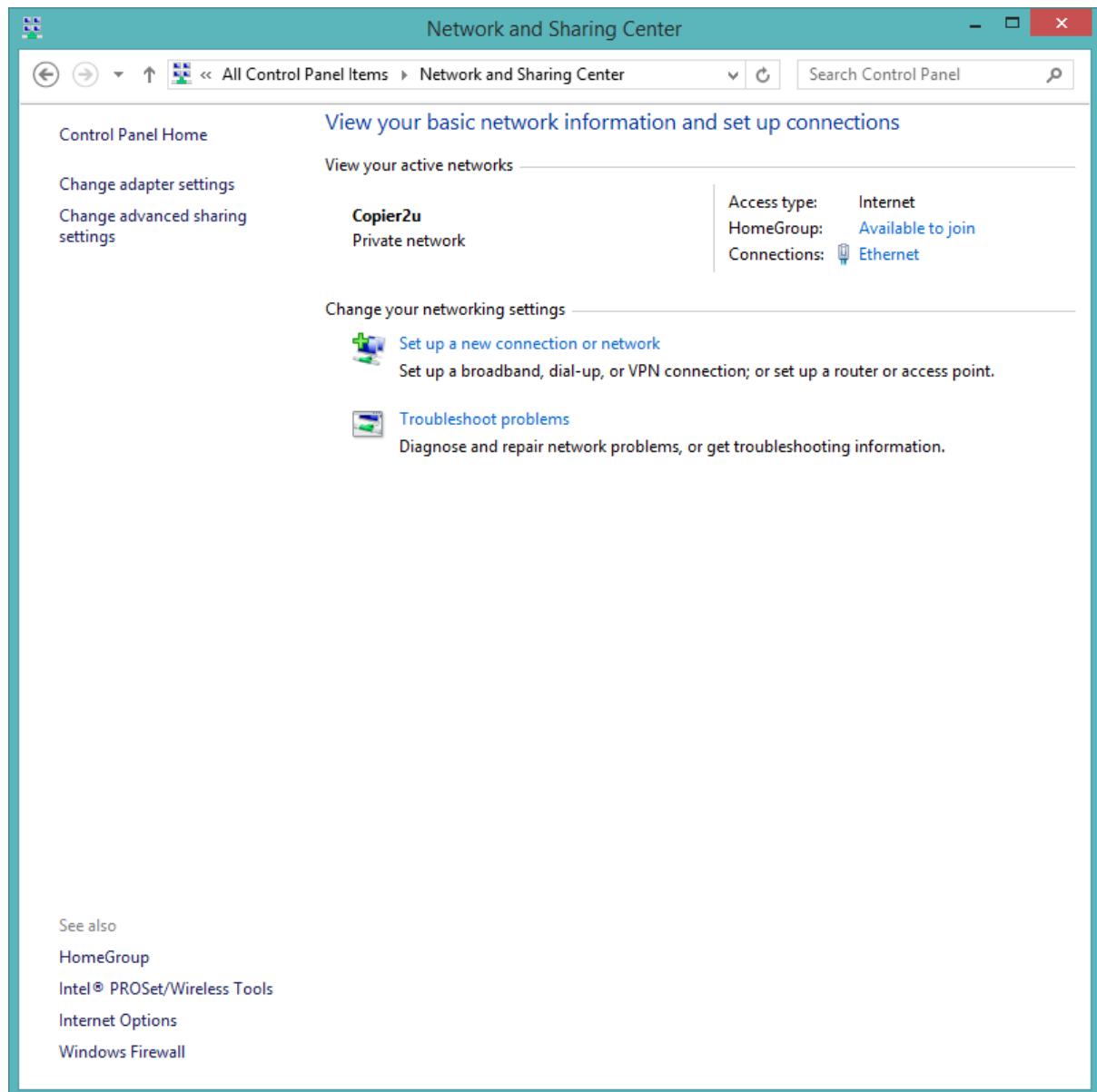
Enter icon **Windows** at your Keyboard

Search: Network and Sharing Center

OR

Open Control Panel, Network and Internet, Network and Sharing Center

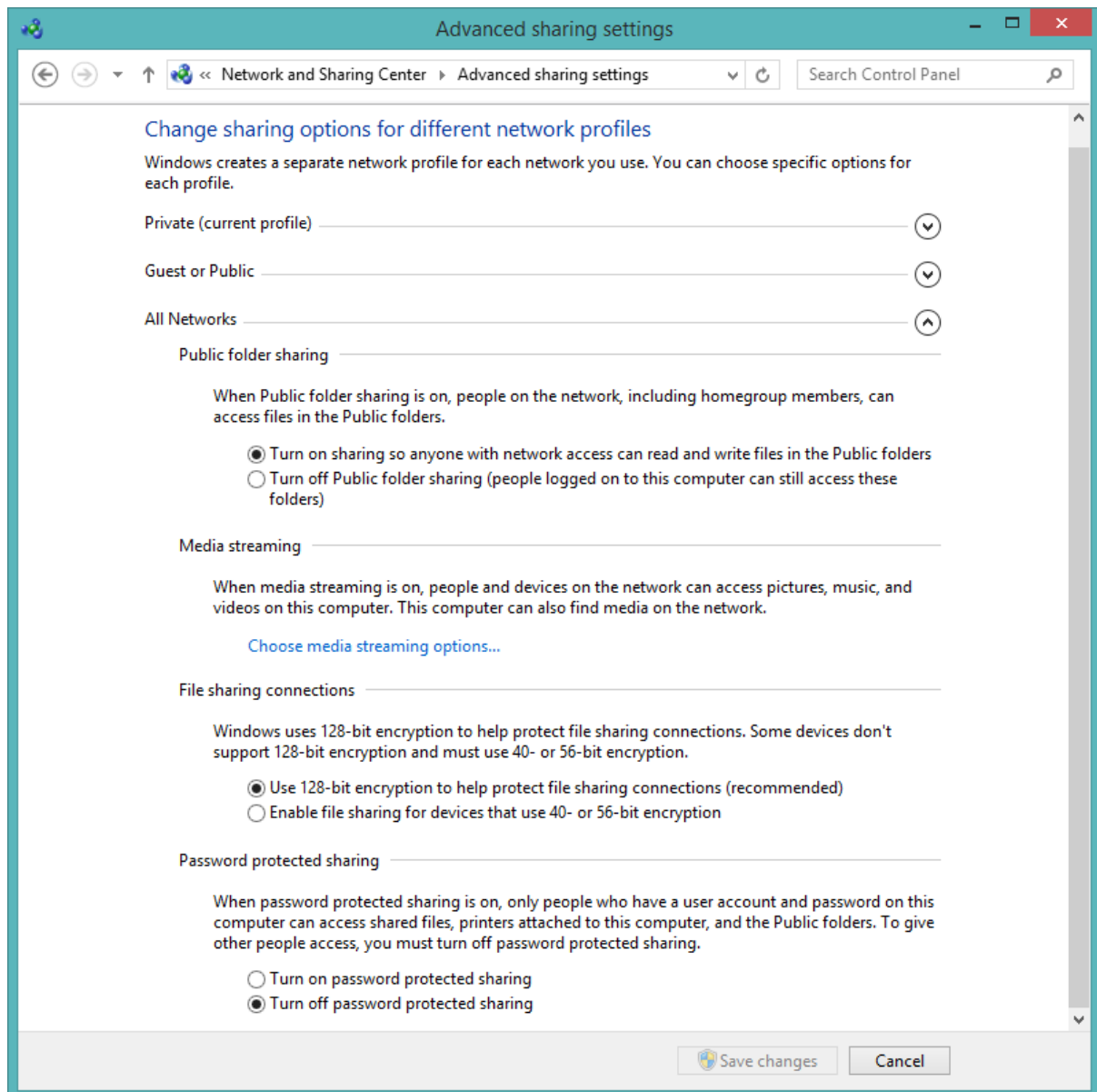
Select **Change advanced sharing settings**



Please find **Public folder sharing** and make sure **tick upper selection (Turn on sharing)**.

Please find **Password protected sharing** and make sure **tick below selection (Turn off password)**.

Example as below:



FOR USER WINDOWS 8 & 10 ONLY

2nd STEP

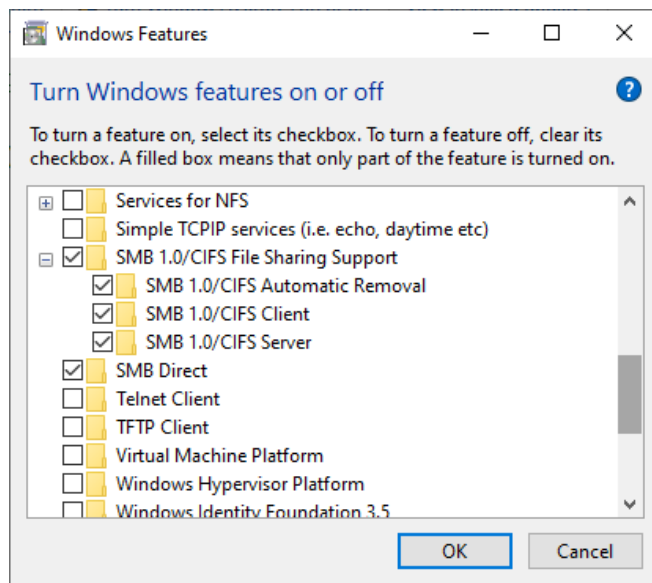
Enter icon **Windows at your Keyboard**

Search: Turn Windows Features on or off

OR

Open Control Panel, Programs, Turn Windows Features on or off

Please find setting **SMB** and make sure tick all as below:

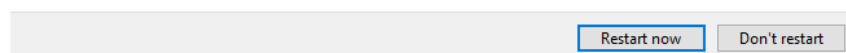


Please **restart your PC** after finish loading. **Must restart** even not display like below:



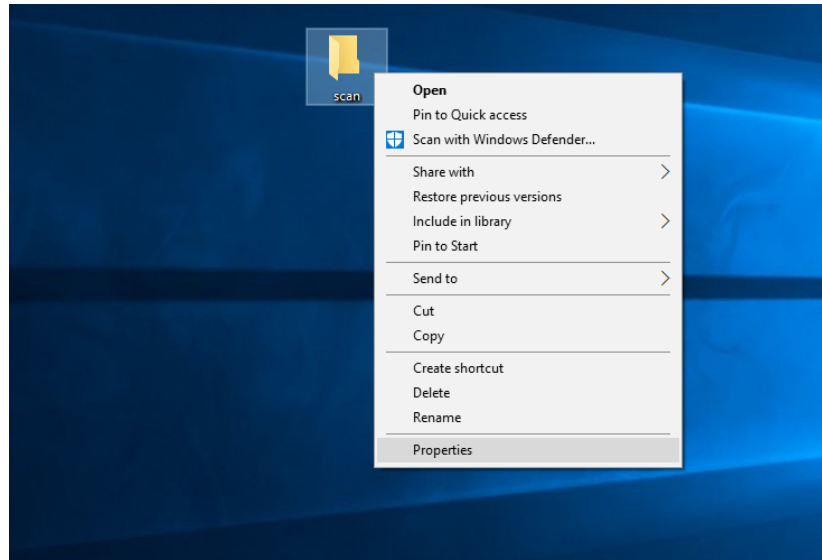
Windows completed the requested changes.

Windows needs to reboot your PC to finish installing the requested changes.

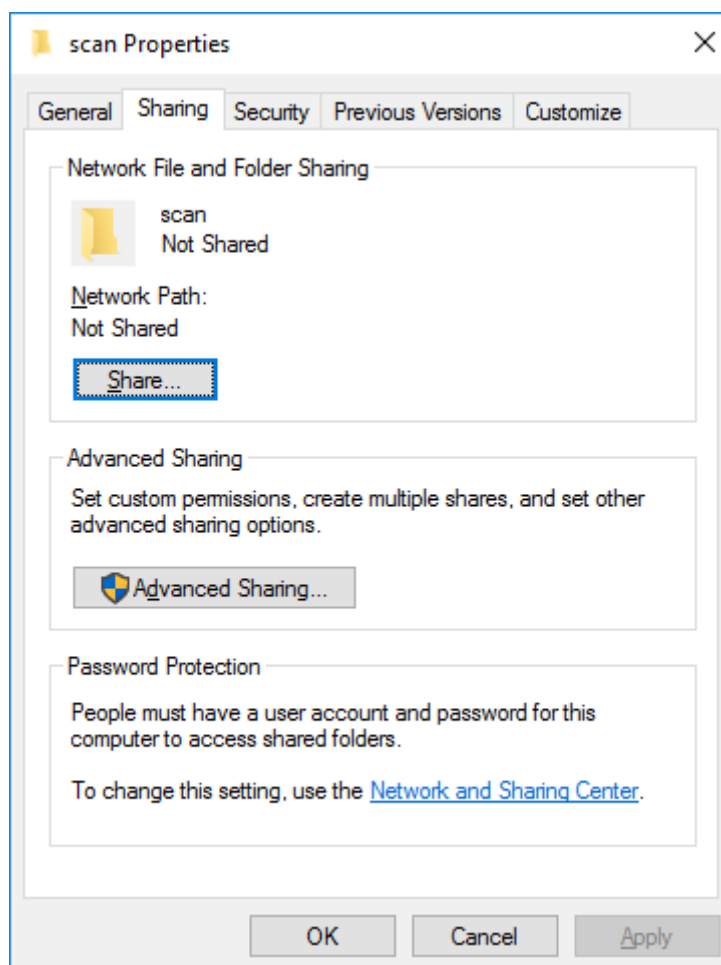


LAST OPTION/STEP IF STILL FAIL

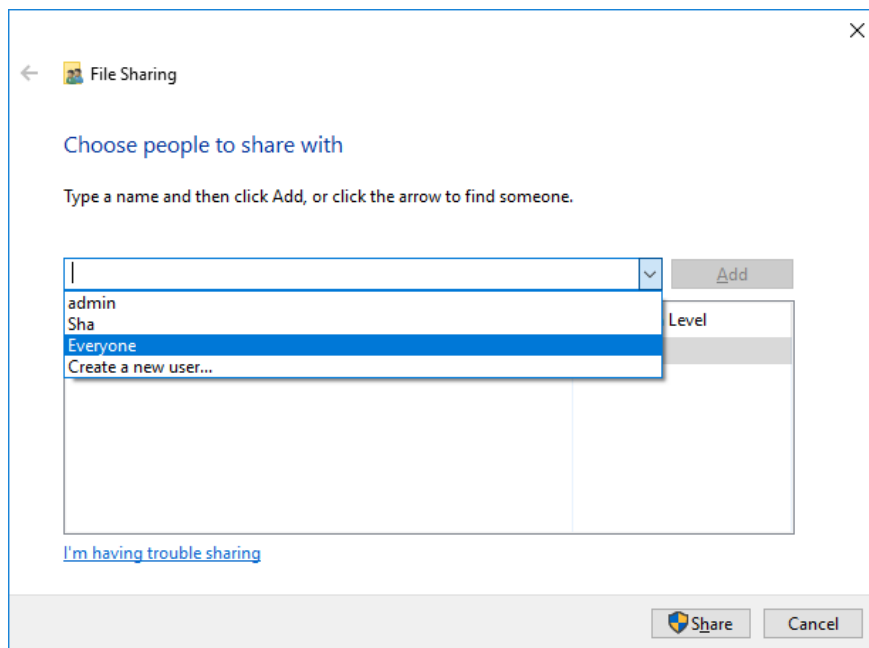
1. Right click at main scan folder and select Properties



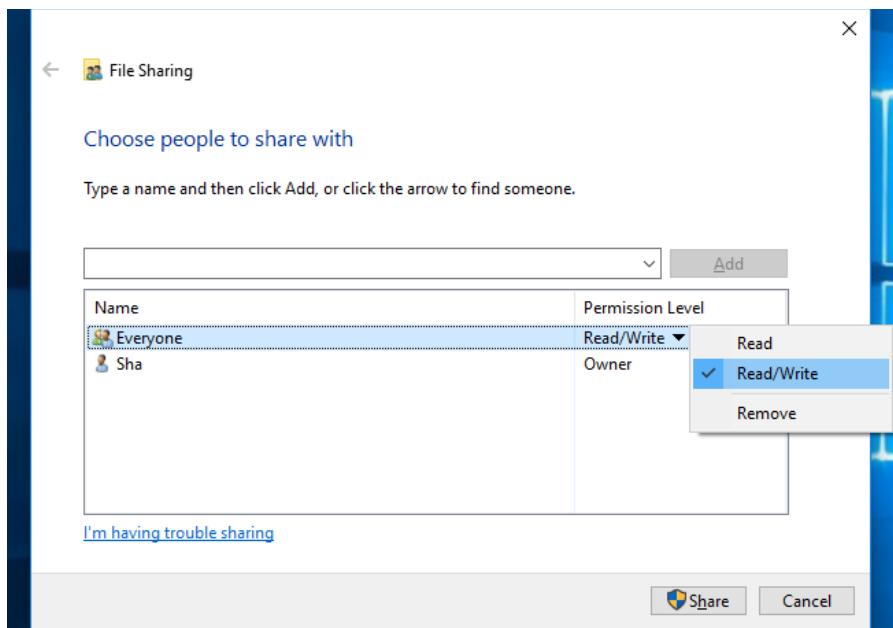
1. Go to tab "Sharing" and click button "Share".



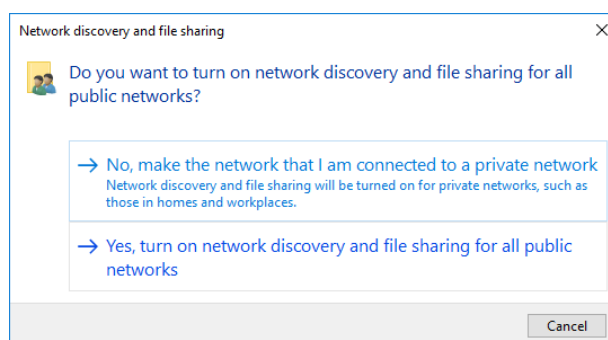
2. Choose "Everyone" and Add



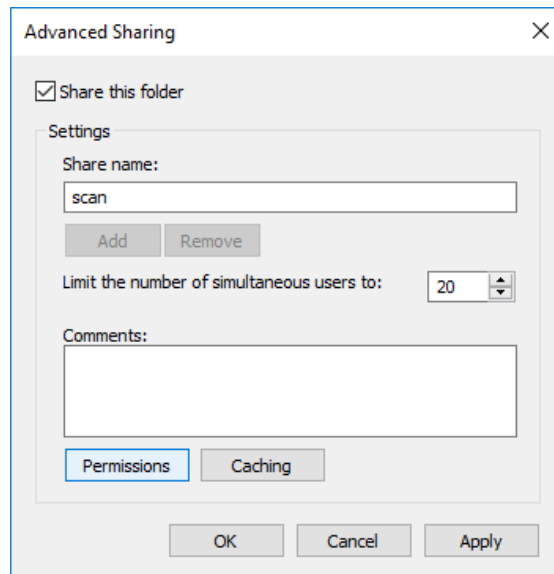
3. For Permission Level, choose "Read/Write"



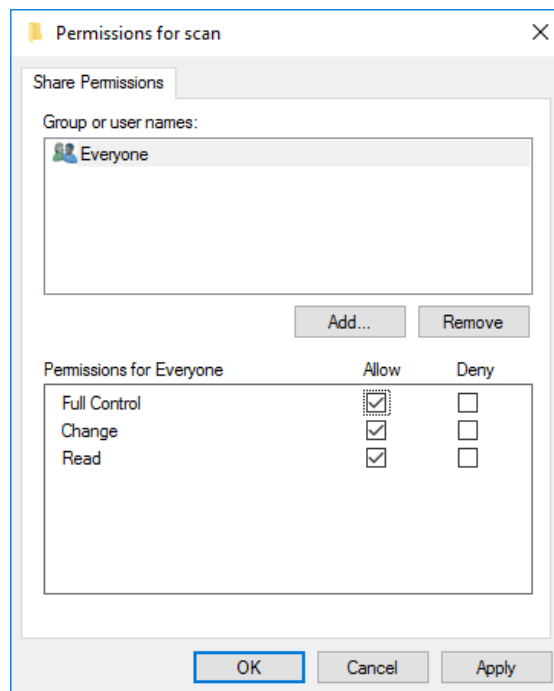
4. Choose, "Yes....."



5. Tick the "Share this folder" and click Permissions



6. Allow all, apply and OK.



7. Please test scan, thanks.