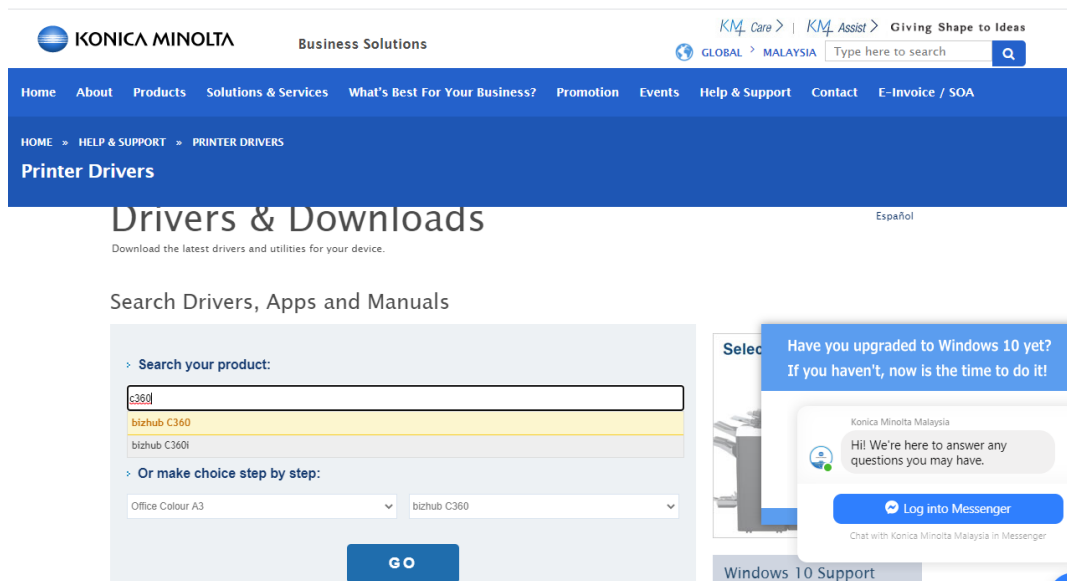
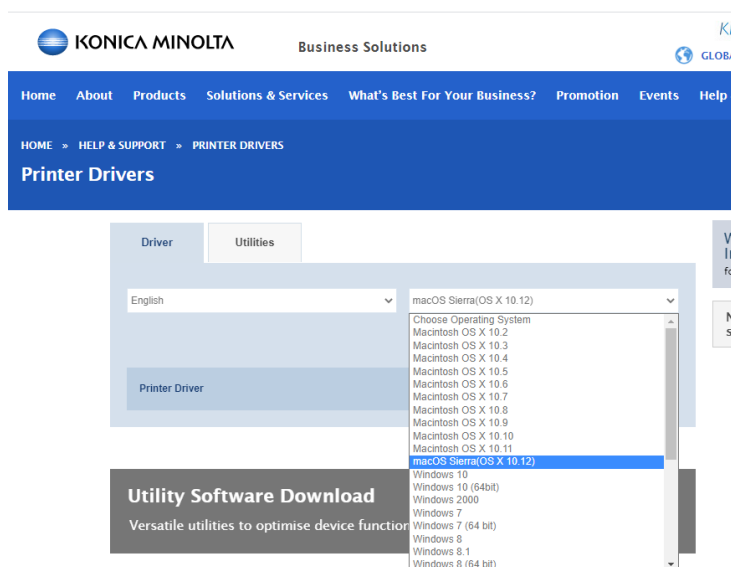


MANUAL GUIDE SET UP PRINTING FOR MACBOOK

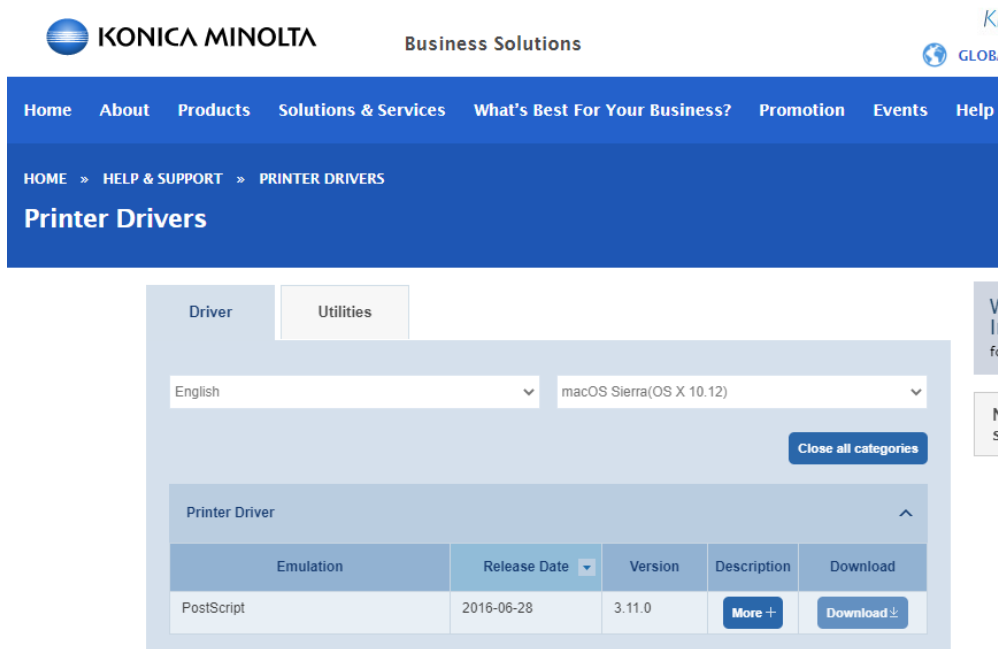
1. Please enter this website to download the driver:
<https://konicaminolta.com.my/home/help-support/printer-drivers/>
2. Type model of machine at Search your product and click Go. Example: C360, then select bizhub c360



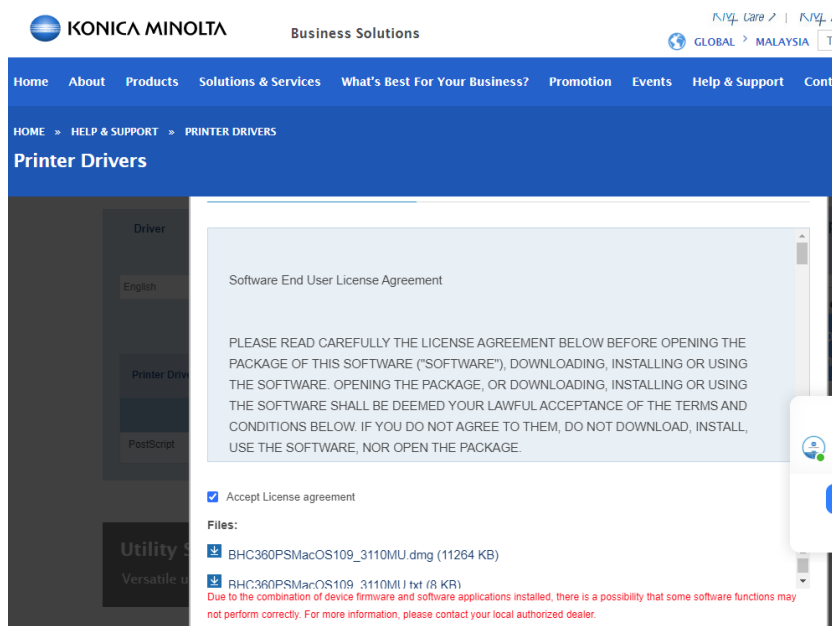
3. Choose Operating System can find out at Icon Apple (About this macbook). Select OS Type.



- Then click Open all categories and Click Download at PostScript

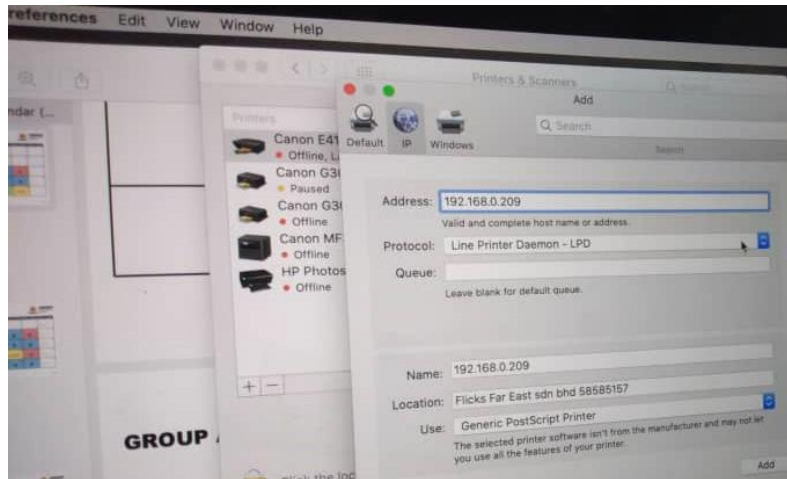


- Tick Accept License Agreement and Click 1st link format .dmg to download the driver



- After download, click the driver printer. Check at desktop, open folder driver bizhub – install the driver as usual.
- Open System Preferences click at Printers & Scanners.
- Select Add (+) printer and choose IP

9. Address: Insert IP Address machine
Protocol: Line Printer Daemon – LPD
Name: Type model machine in front ip address
Use: Select software and search model machine, example: C360 PS
10. Click Add to proceed and save. Example as below:



IF GOT ID DEPT FOR PRINTING

Open any **document Microsoft/Noted**

Click **File**, select print

Find **Output Method** setting

Tick User Authentication

Insert your Id username & password

Tick save, click OK to save

Then, select **Quality**

Choose Auto Color

Go at Preset, select **Save current preset as Color**

Select **Quality** again

Choose Gray Scale

Go at Preset, select **Save current preset as Black**