

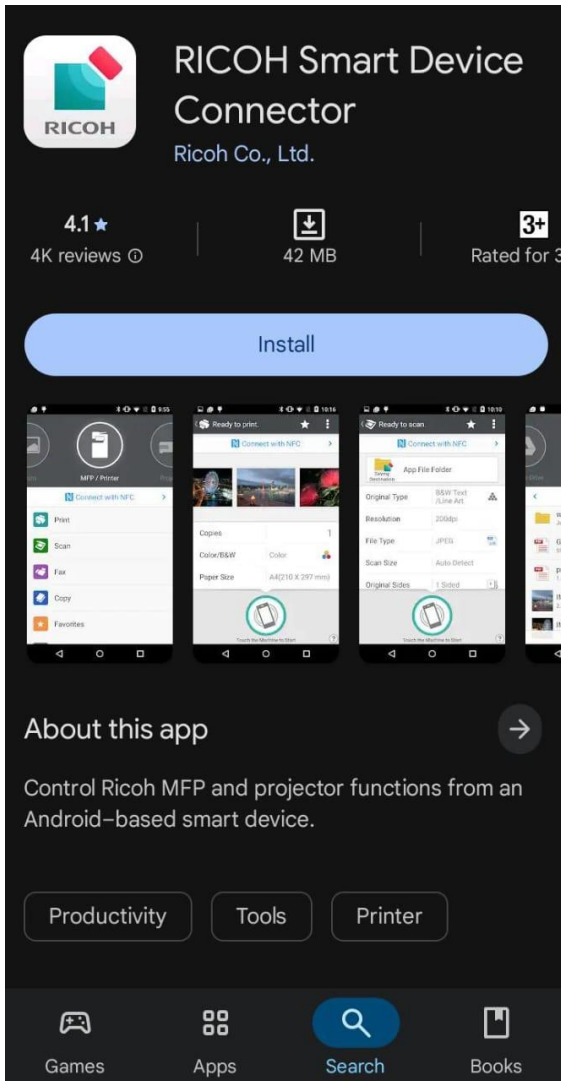


Manual Guide

Ricoh Mobile

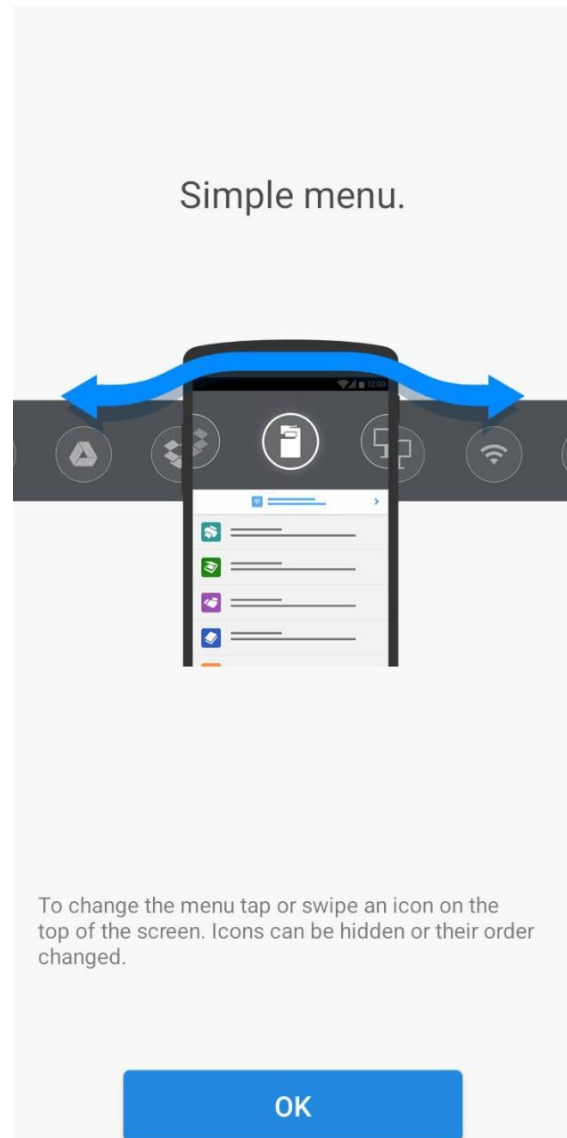
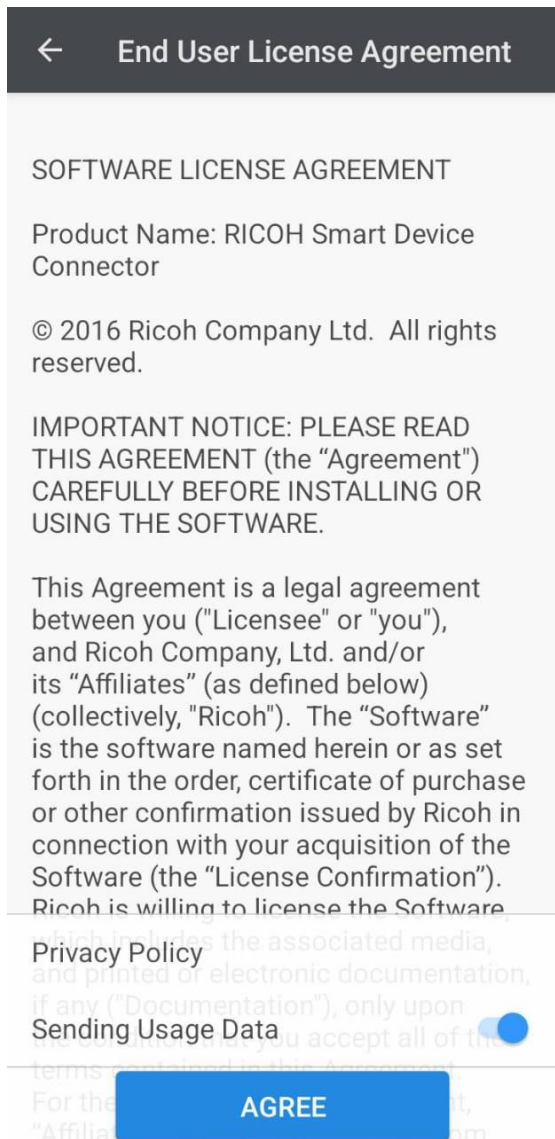
Printer Setup Guide

1. Go to “Play store” for Android; Go to “App Store” for iOS
2. Search for “RICOH Smart Device Connector”



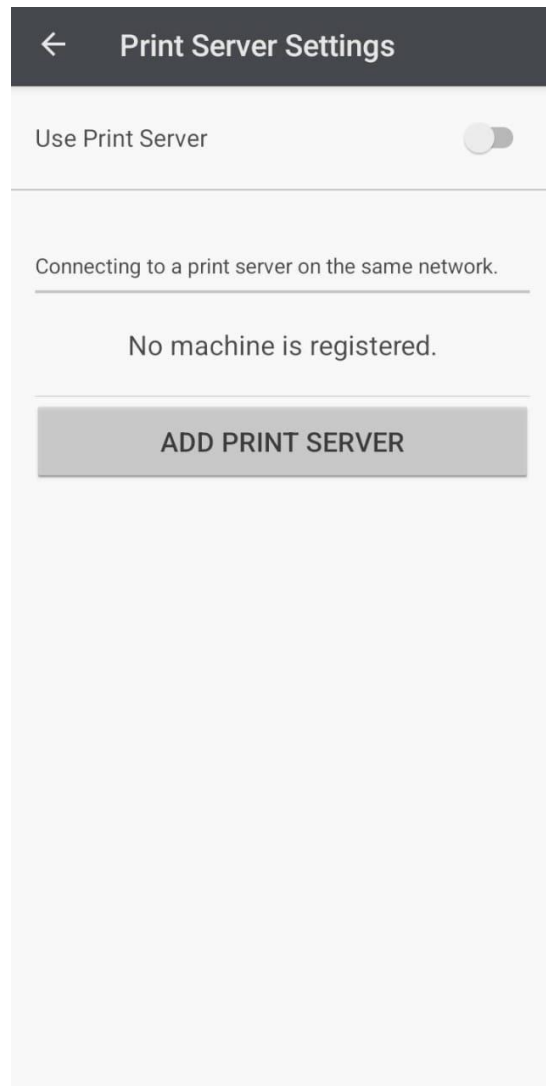
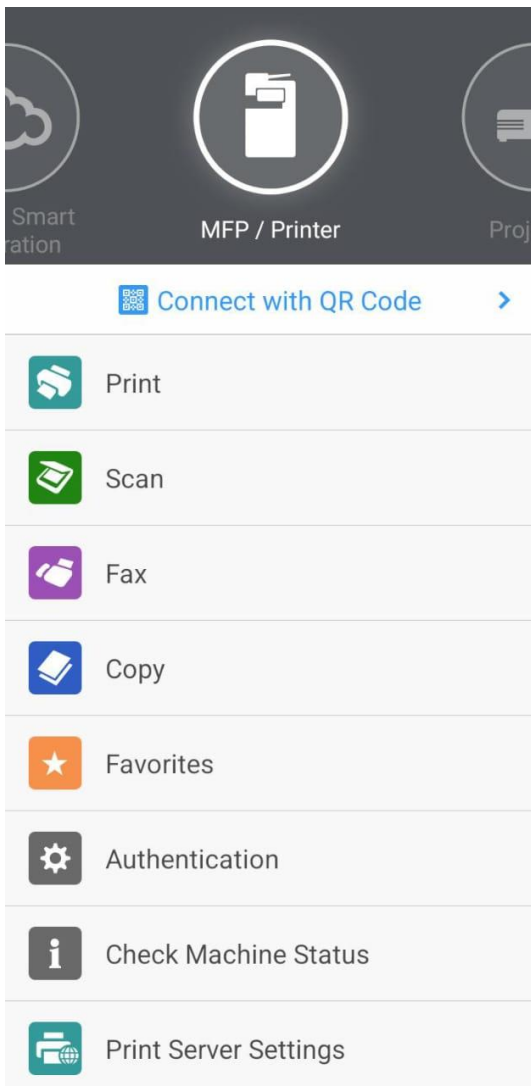
3. Press “Install”

4. Run the “application”

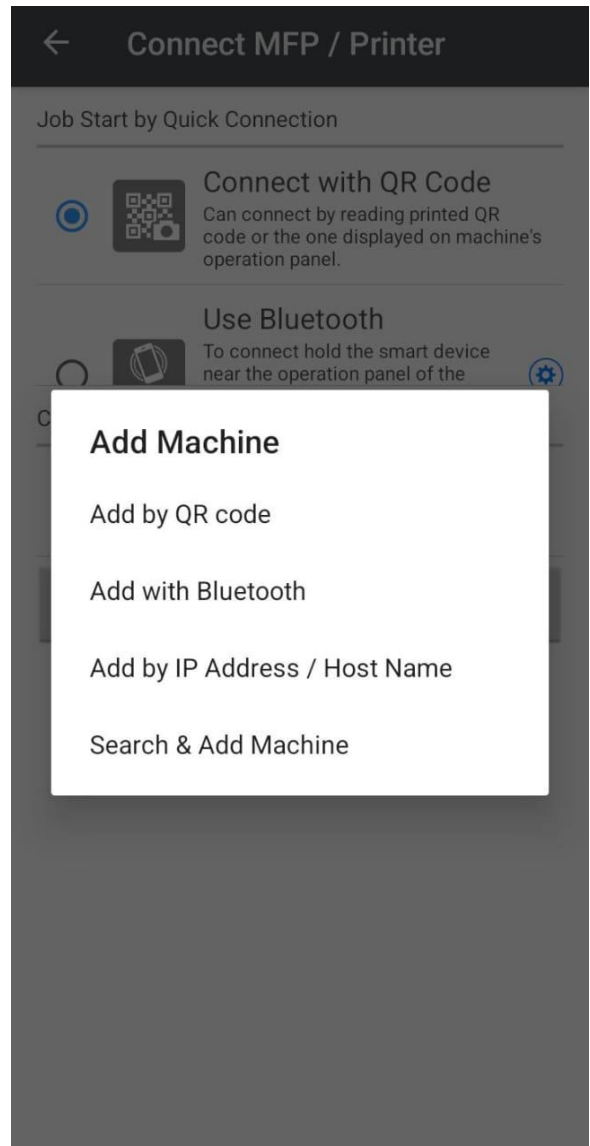
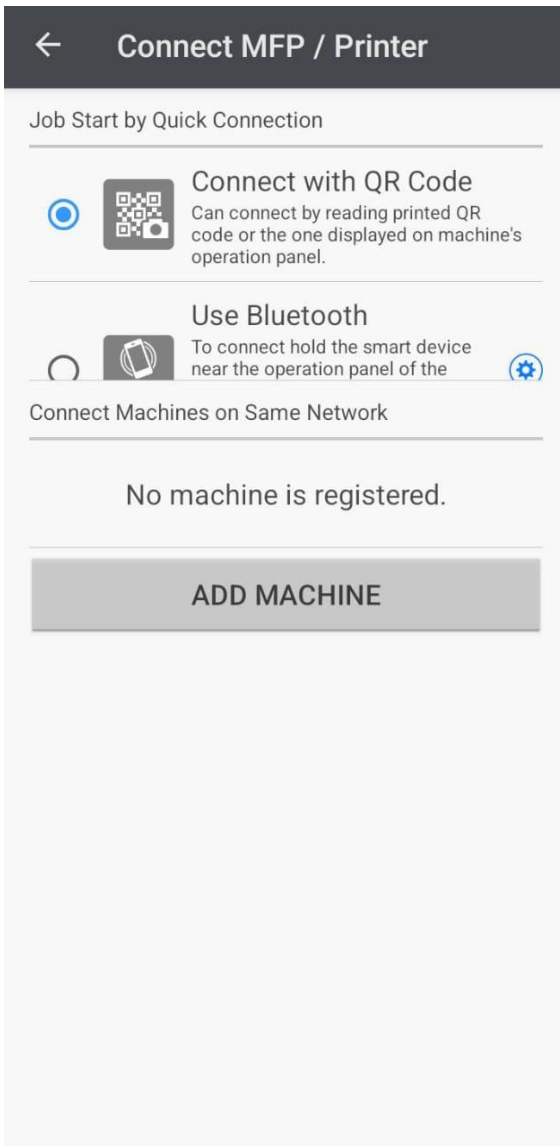


➤ *Press “Accept” and OK*

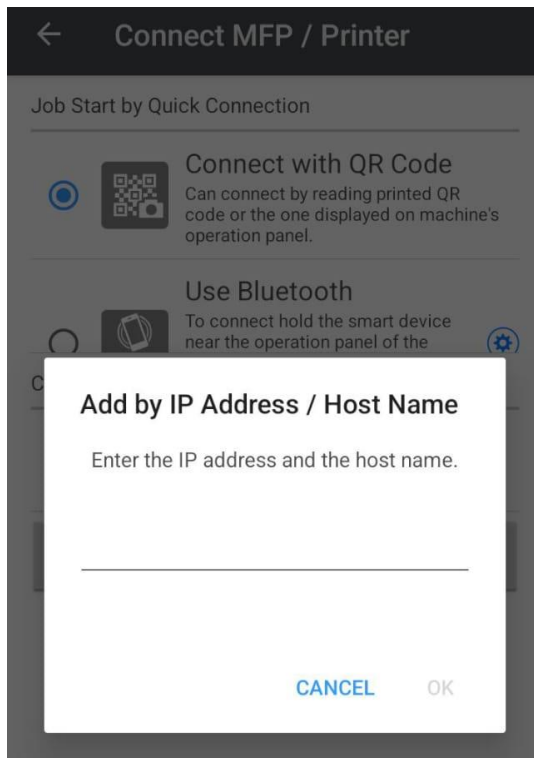
5. Choose “Print Server Setting”, Tap button “ADD PRINTER SERVER” to add Printer



6. Click “ADD MACHINE” and choose “Add by IP Address / Host Name”



7. Enter your printer "IP Address machine" and make sure connect WIFI SAME NETWORK with MACHINE



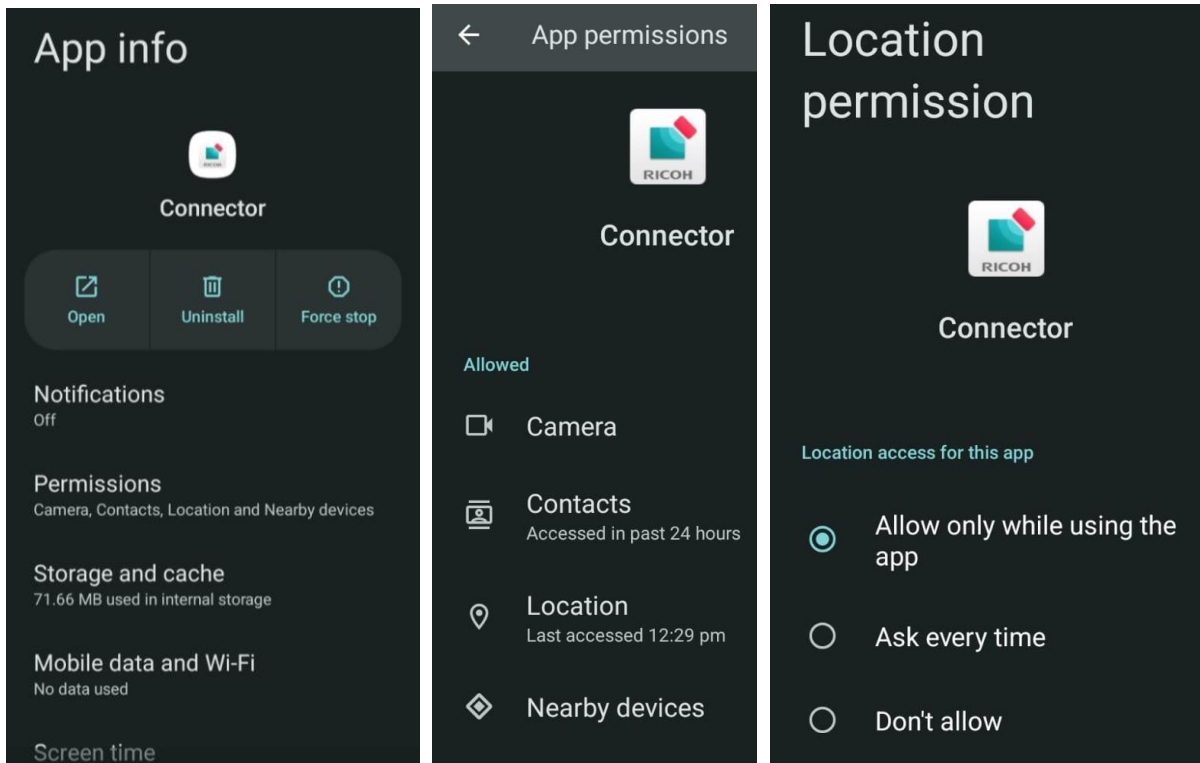
STEP TO CHECK IP ADDRESS AT COPIER MACHINE

- click button USER TOOL
- COUNTER

8. Must allow all at “Permissions”

- ✓ Contacts
- ✓ Camera
- ✓ Location
- ✓ Nearby devices

9. Tick “Allow only while using the app”



DONE, THANK YOU