

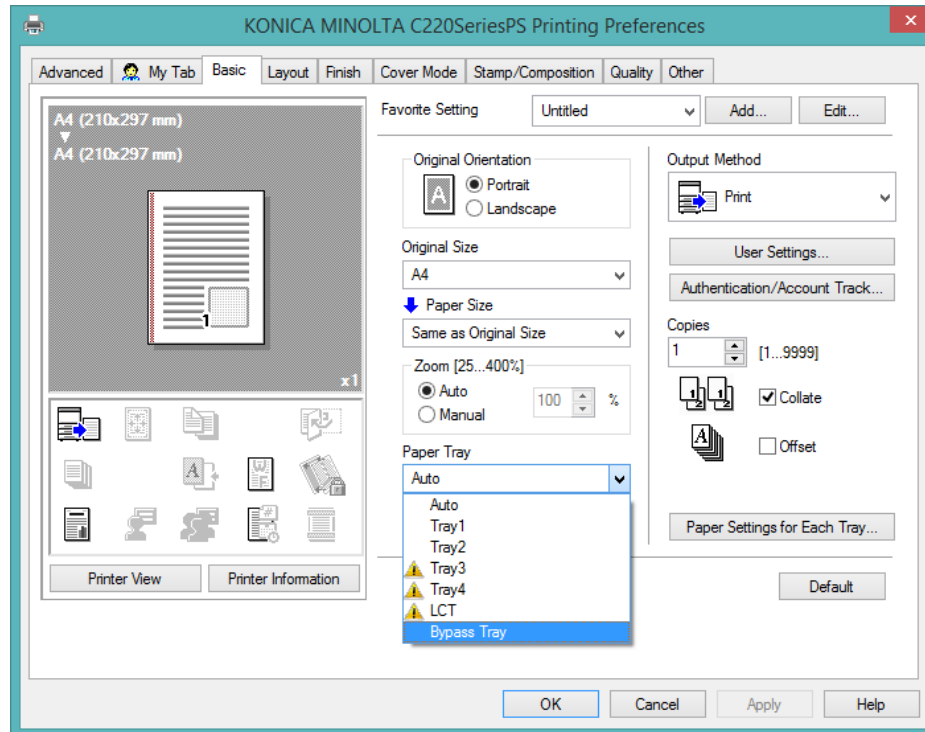


# Manual Guide

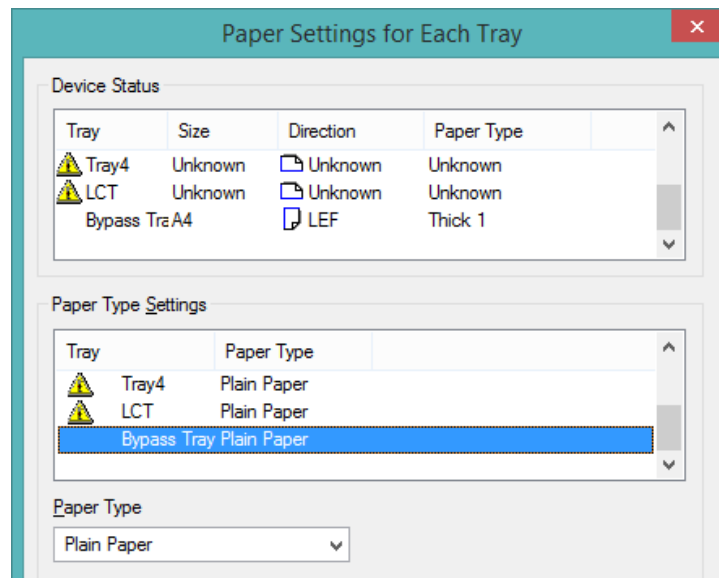
KONICA MINOLTA

PRINTING STICKER PAPER

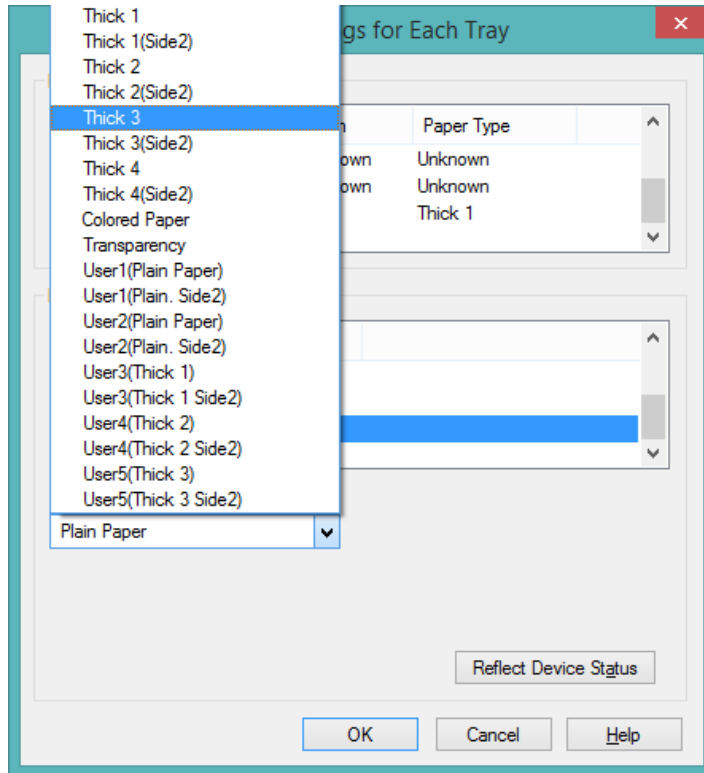
1. Before click "Print", please check at **Printer Properties** to select the **Bypass Tray** and **Paper Type**.



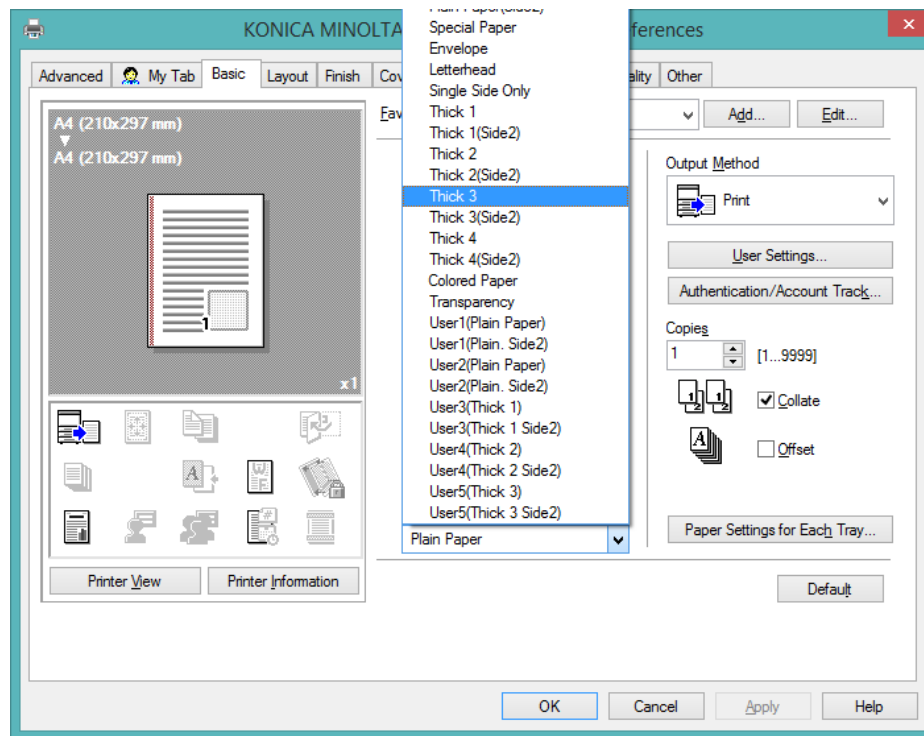
Printing Preferences -> Basic -> Paper Tray: Bypass Tray



Click at Paper Settings for Each Tray



Select Paper Type

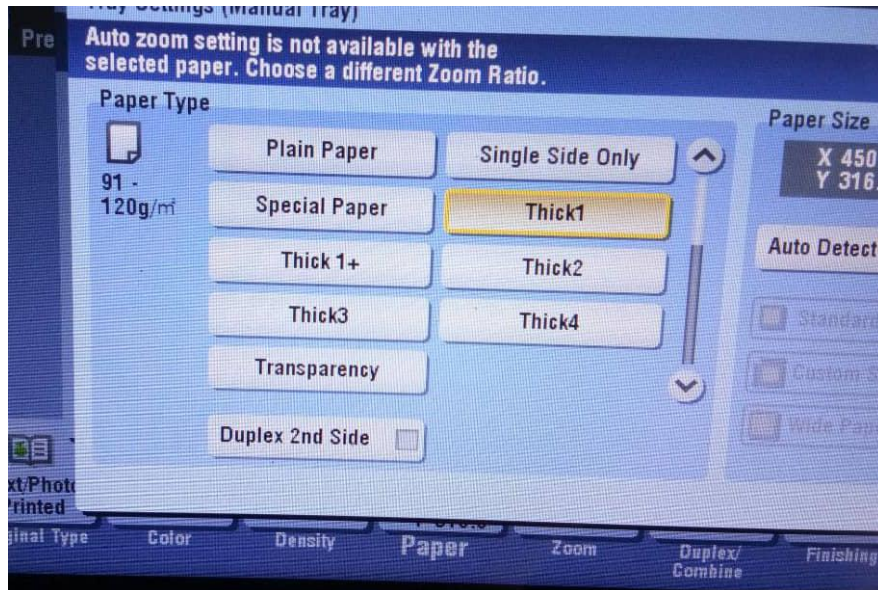


Paper Type/Paper Settings

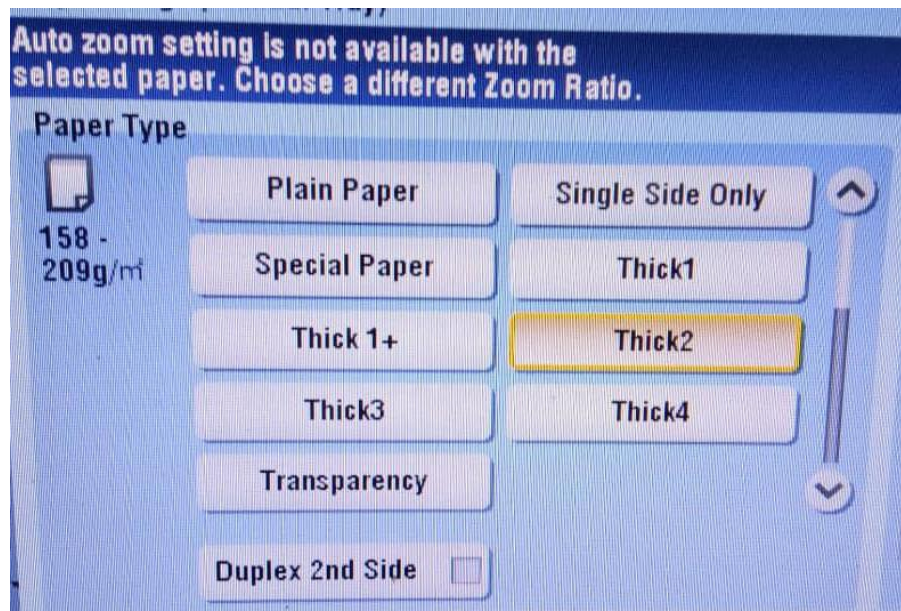
2. Please select Tray Setting (Manual Tray) at Machine bizhub Konica Minolta.

If your paper size is:

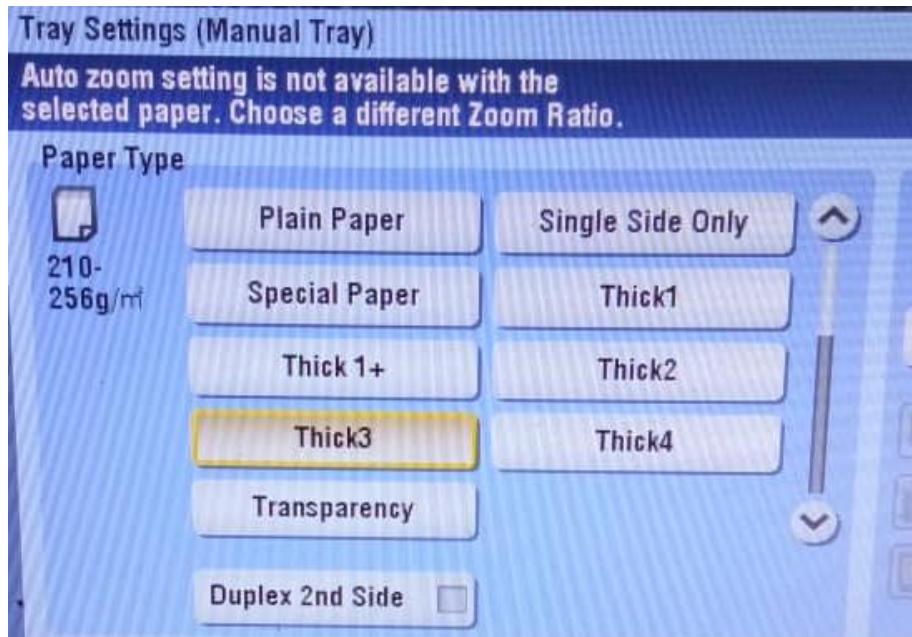
i) **91 - 120 gsm, select Thick1**



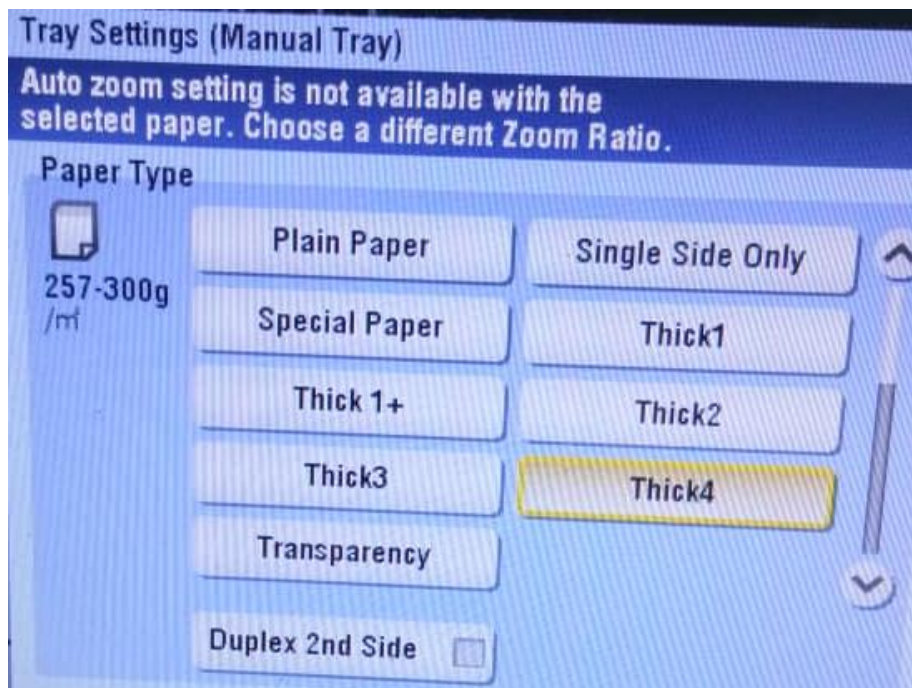
ii) **158 – 209 gsm, select Thick2**



iii) 210 – 256 gsm, select **Thick3**



iv) 257 – 300 gsm, select **Thick4**



- v) If want to **Custom Size**, can select here



3. After check all setting, can Print and Start.