



# Manual Guide

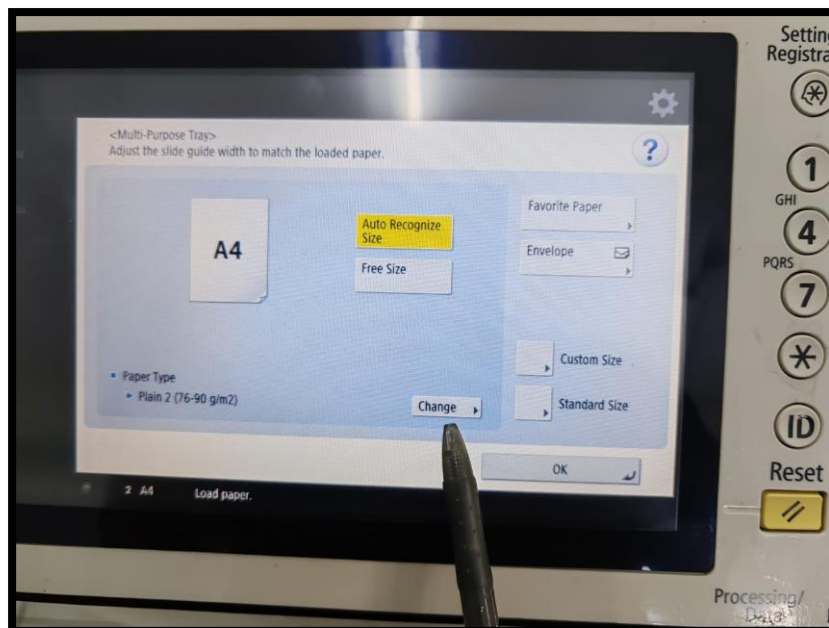
**CANON**

**PRINTING SPECIAL PAPER**

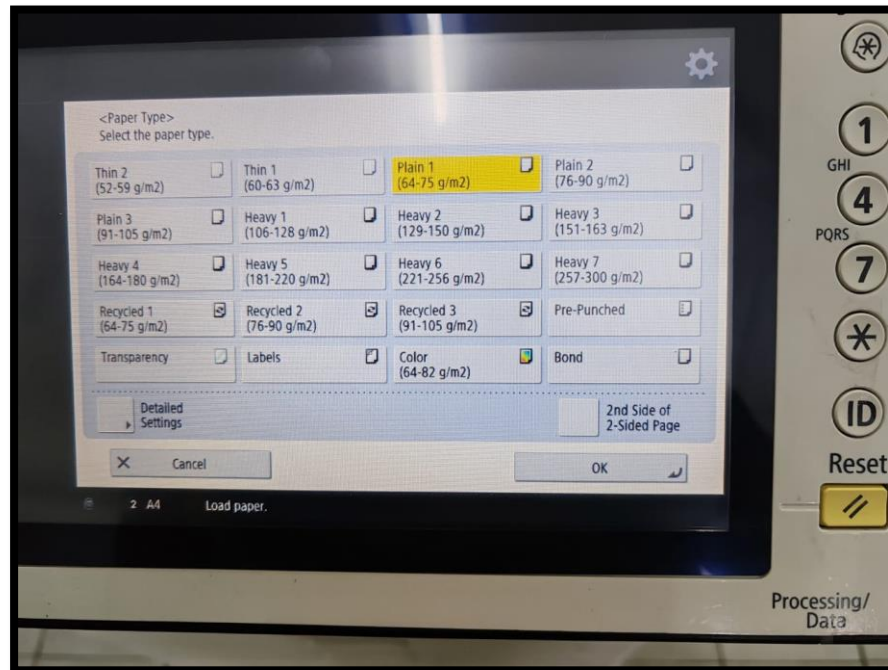
1. Put paper on the bypass/multi-purpose tray



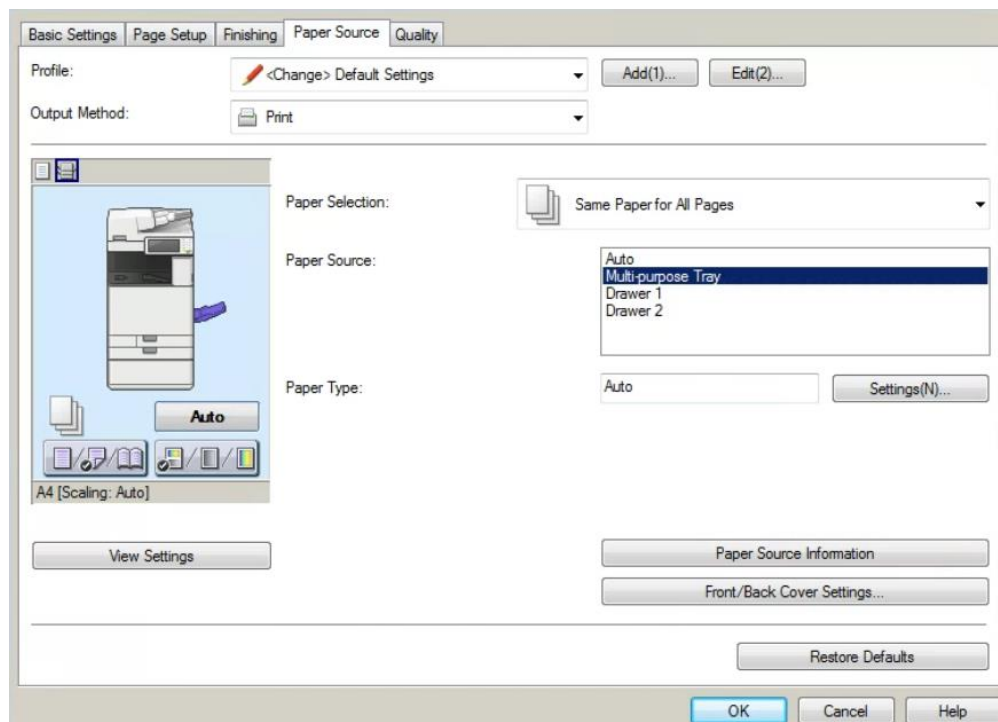
2. On the screen will auto detect to Adjust the slide guide width to match the loaded paper.
3. Please select "Change" to choose the paper type.



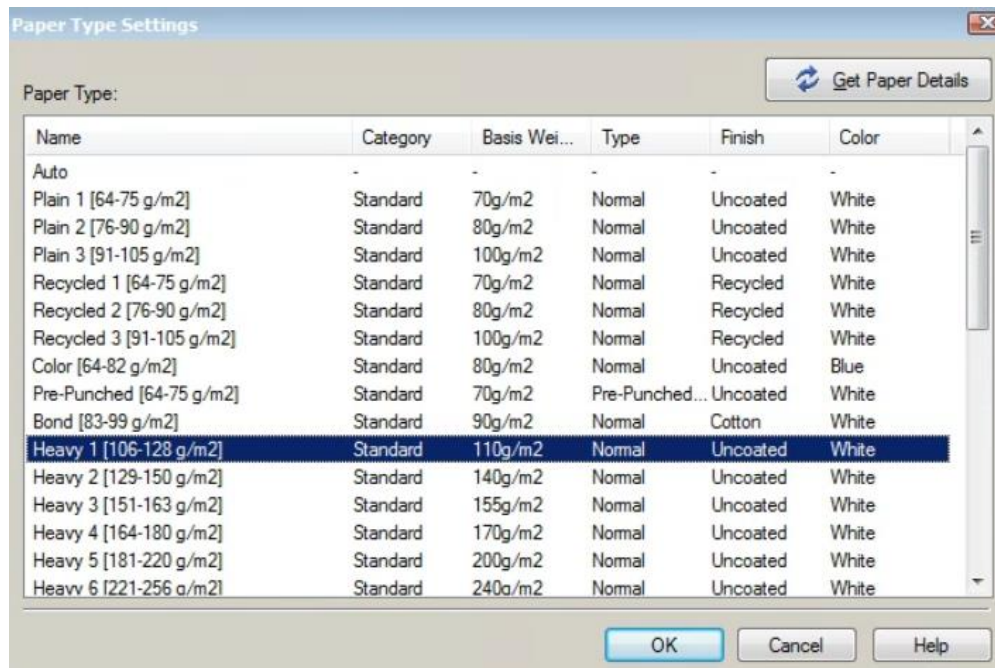
- Please choose the Paper Type and follow the same “gsm” with printer driver setting at your devices.



- Click OK to save setting and click Apply OK.
- Before click “Print”, please check at **Printer Properties** to select **Paper Type** at **Paper Source**.



Properties -> **Paper Source** & choose **Multi-purpose Tray** -> **Paper Type** -> click **Settings(N)...**



Select at Paper Type: Choose how many thickness that special paper (gsm)

7. Click OK to save setting and click Apply OK. Ready to Print.