

# **Manual Guide**

**Konica Minolta**

**Printer Setup Guide**



## Download printer driver for Windows desktop

### Method 1

1. Go to URL <http://www.biz.konicaminolta.com/download/driver.html>
2. Type your printer name on “Search your product” column, click “GO”

**KONICA MINOLTA** Business Solutions Inquiry | Giving Shape to Ideas  
Global Search

Home Products Services & Solutions **Support & Downloads** Environment About Us Where to buy Global Business Services

Business Products > Support & Downloads > Download Centre

**Search your product:**

Select from the drop downs below:

Choose Product Type Choose Product

**GO**

**Windows 10 Support Information**

**Compatibility information**

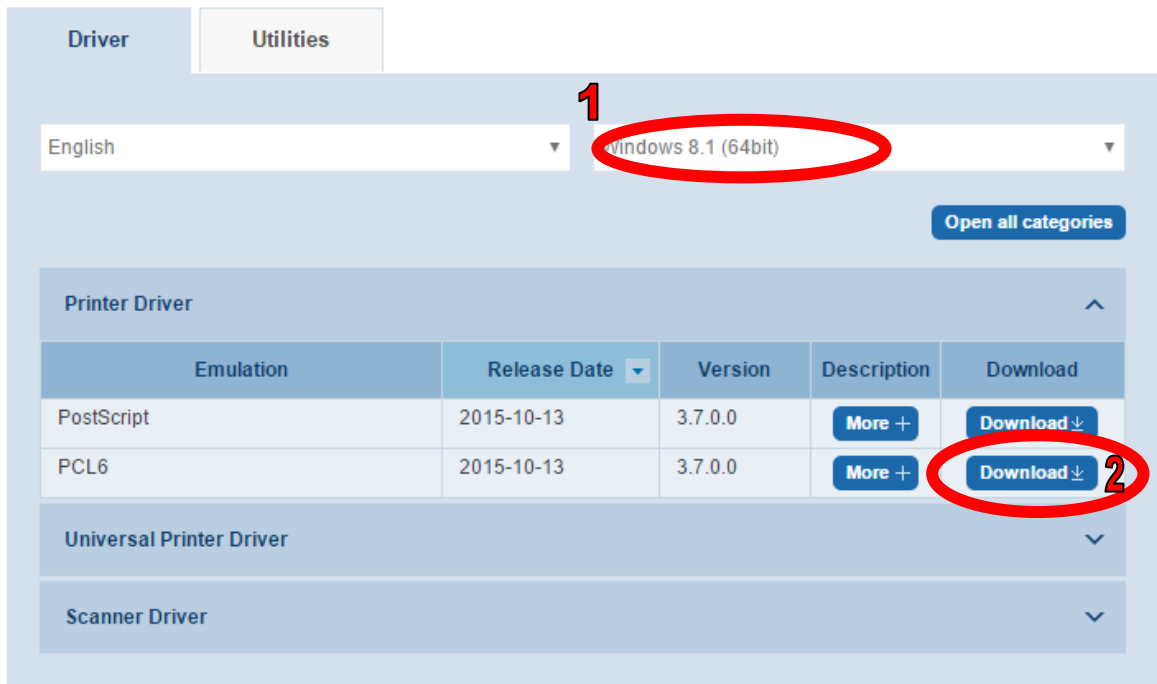
**Latest updates on Windows 10 compatibility**  
Konica Minolta's Windows 10 support is nearly done. Update information such as compatible hardware & software will be announced continuously.

**Notification of end of support products**  
Konica Minolta, Inc. will end support for all printer drivers, applications, etc. for Windows XP on 9 April, 2014. [For details](#)

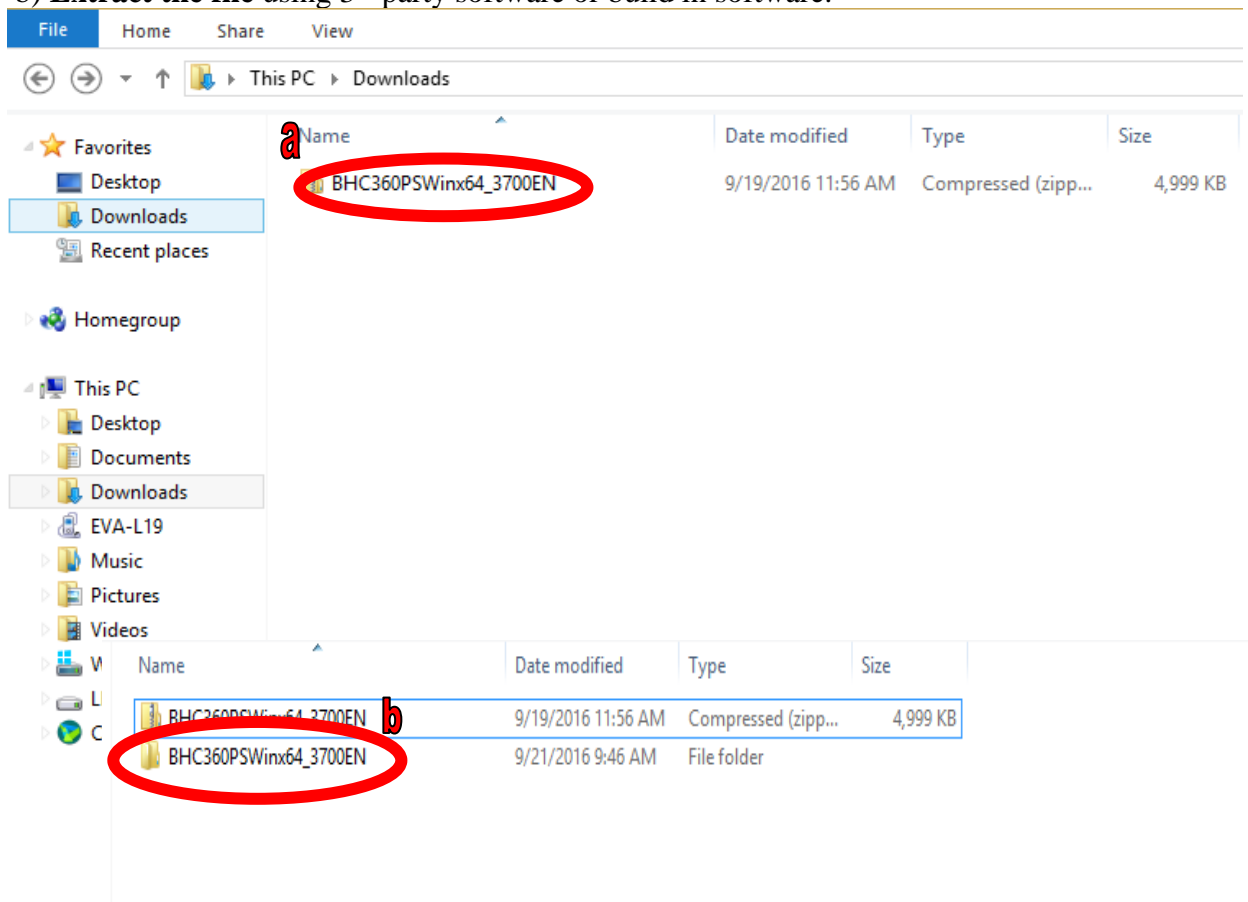
**Need driver-less printing?**  
Print documents without installing a printer driver.

Other Support Information

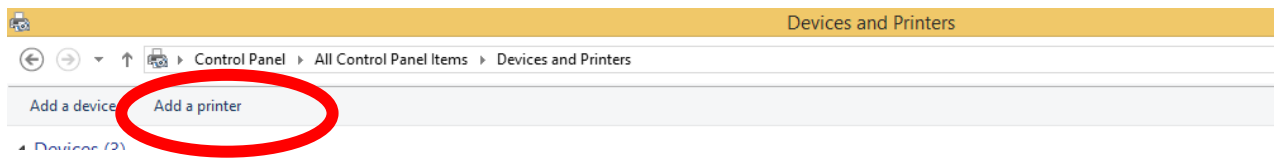
3. Select your **Operating System** version (example winXP, win7, win8,win10 and etc.), then click on printer driver for expand download “**PostScript**”



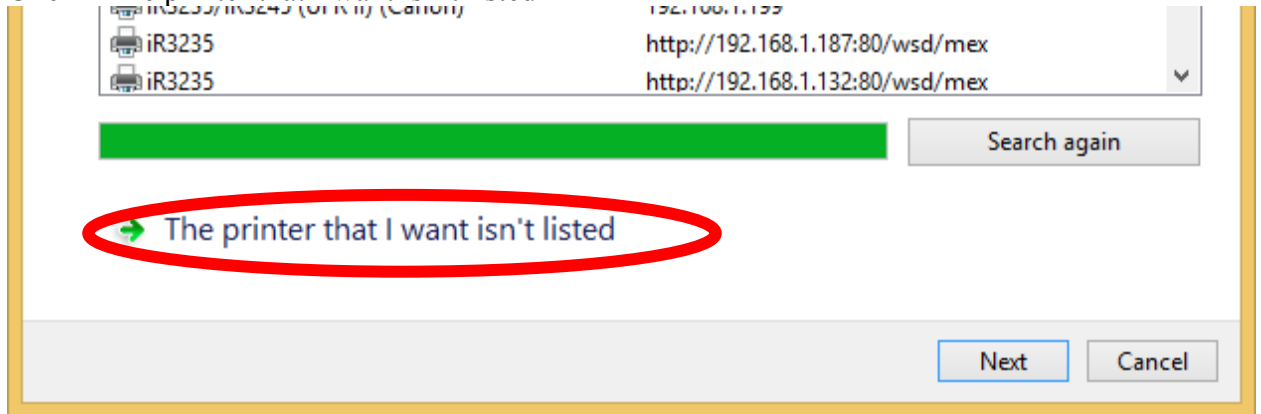
4. a) Once download finish go to the “**Download**” folder file will be in zip format  
b) **Extract the file** using 3<sup>rd</sup> party software or build in software.



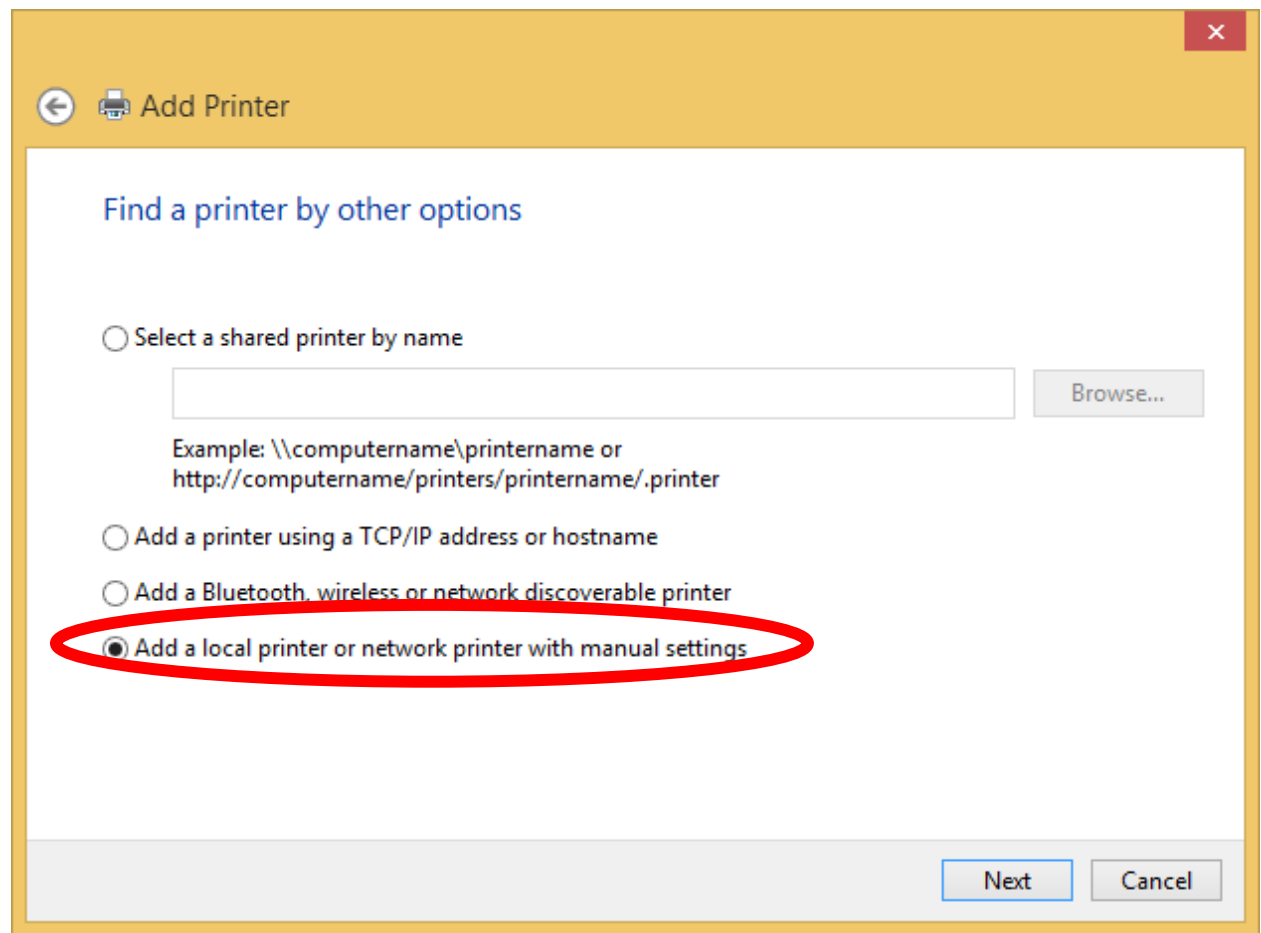
5. Go to “control panel” then click “device and printer “



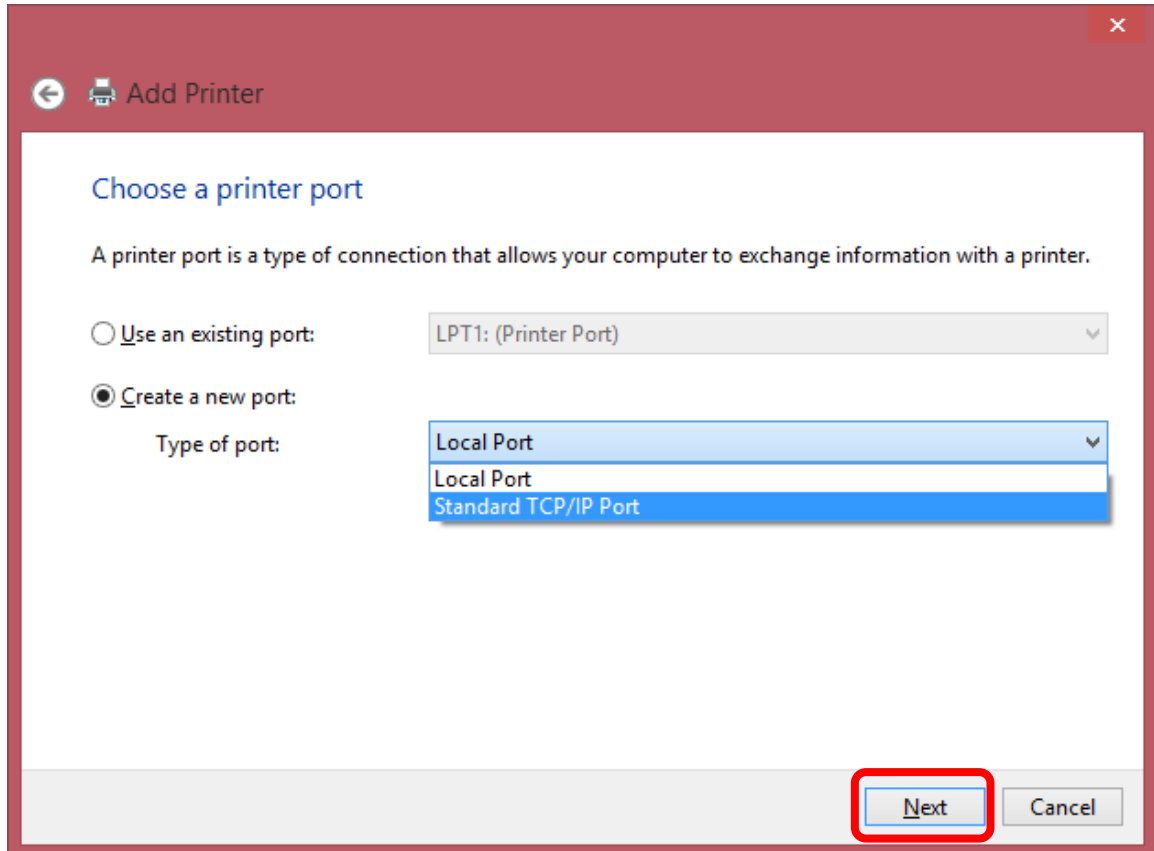
6. Click “The printer that I want isn’t listed”



7. Select “Add a local printer or network printer with manual settings”

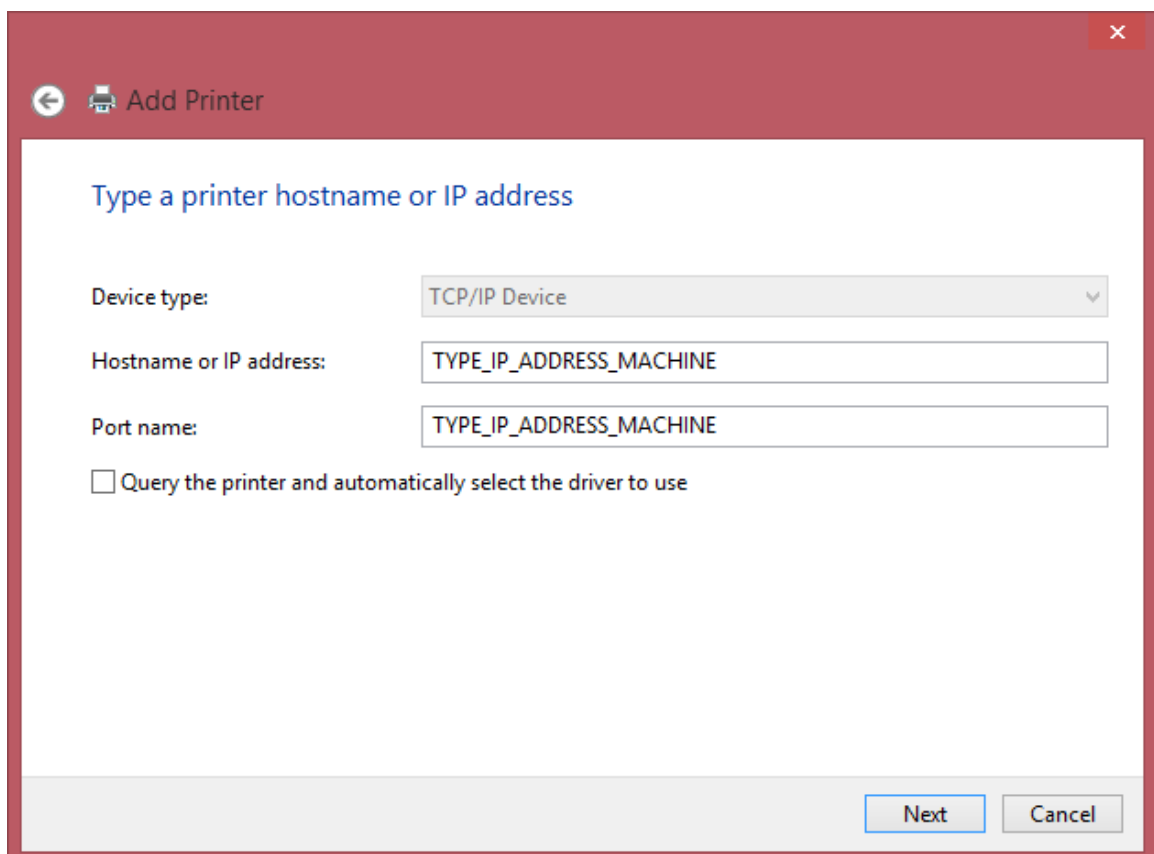


8. Click “next”



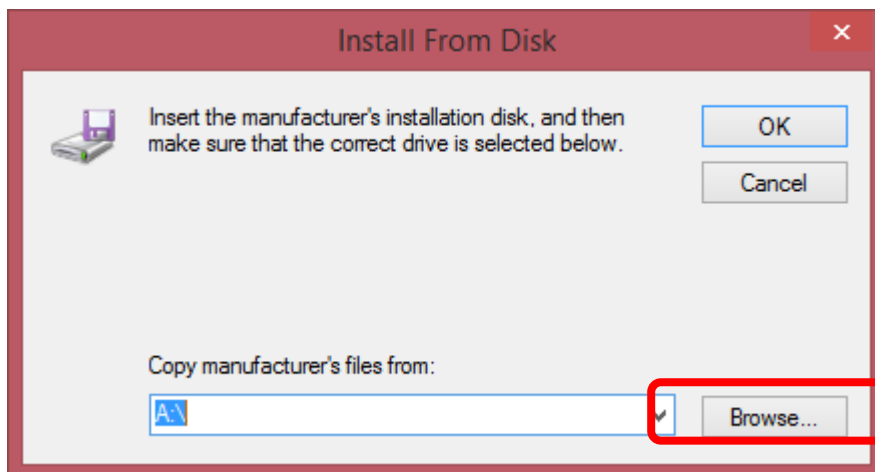
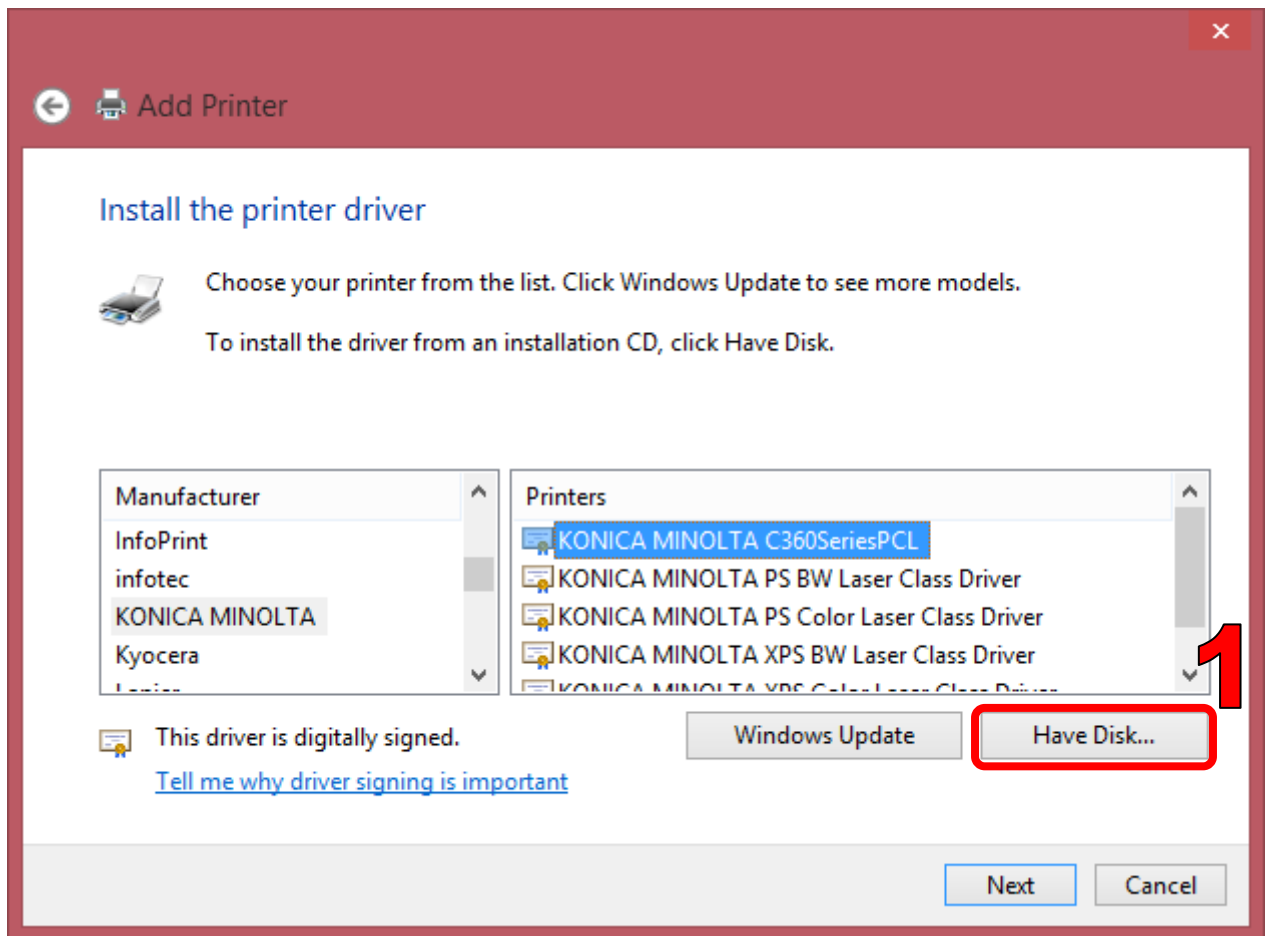
The screenshot shows the 'Add Printer' wizard window. The title bar reads 'Add Printer'. The main heading is 'Choose a printer port'. Below this, there is a descriptive sentence: 'A printer port is a type of connection that allows your computer to exchange information with a printer.' There are two radio button options: 'Use an existing port:' (unselected) and 'Create a new port:' (selected). The 'Use an existing port:' option has a dropdown menu showing 'LPT1: (Printer Port)'. The 'Create a new port:' option has a 'Type of port:' label and a dropdown menu showing 'Local Port', 'Local Port', and 'Standard TCP/IP Port'. At the bottom right, there are 'Next' and 'Cancel' buttons. The 'Next' button is highlighted with a red rectangle.

9. Type the IP Address Machine and untick the lower setting. Next

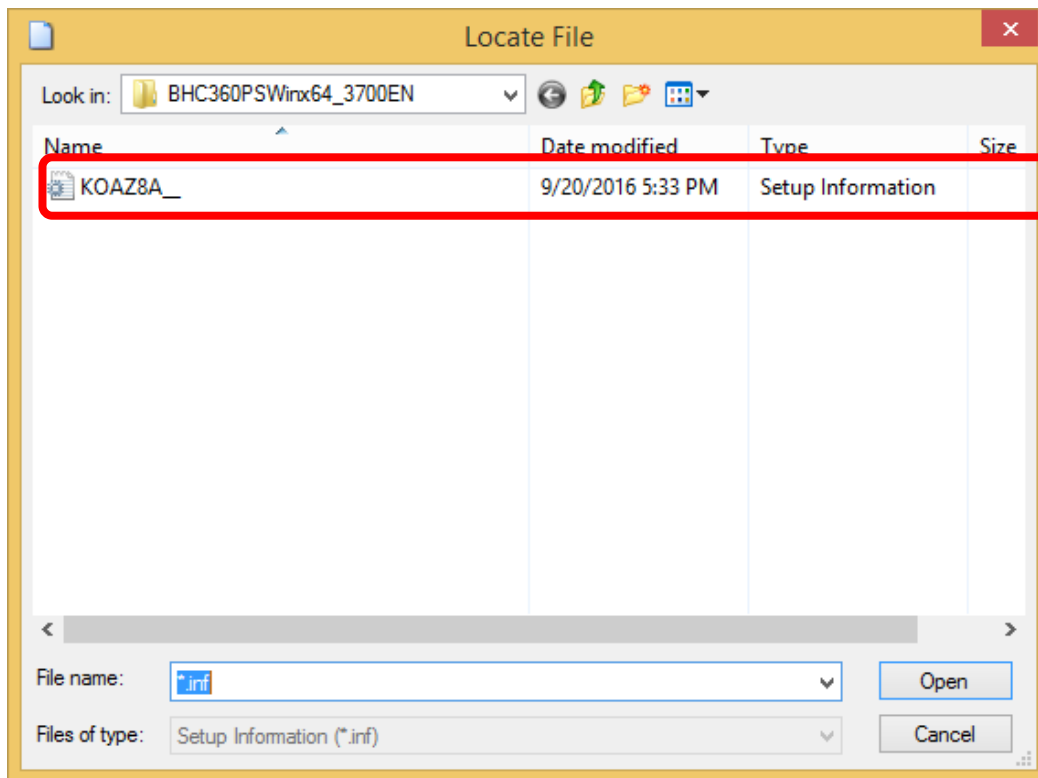


The screenshot shows the 'Add Printer' wizard window. The title bar reads 'Add Printer'. The main heading is 'Type a printer hostname or IP address'. There are three input fields: 'Device type:' with a dropdown menu showing 'TCP/IP Device'; 'Hostname or IP address:' with a text box containing 'TYPE\_IP\_ADDRESS\_MACHINE'; and 'Port name:' with a text box containing 'TYPE\_IP\_ADDRESS\_MACHINE'. Below these fields is a checkbox labeled 'Query the printer and automatically select the driver to use', which is currently unchecked. At the bottom right, there are 'Next' and 'Cancel' buttons.

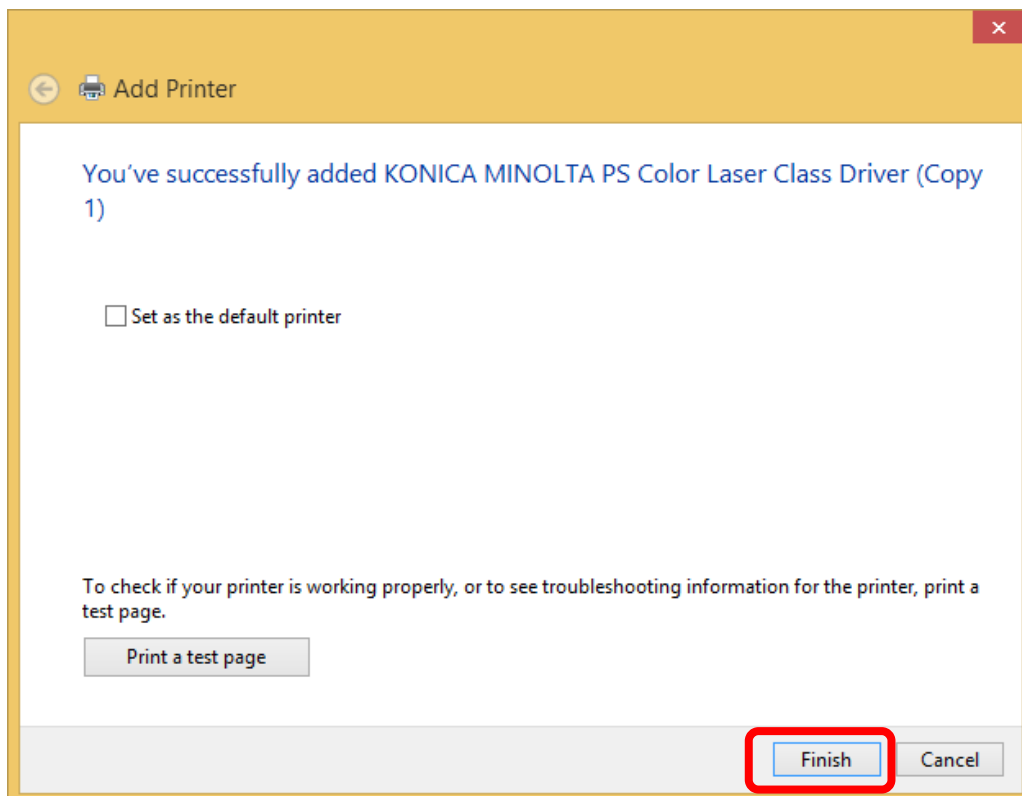
10. Click “Have disk”, click “browse” go to the extract driver folder location



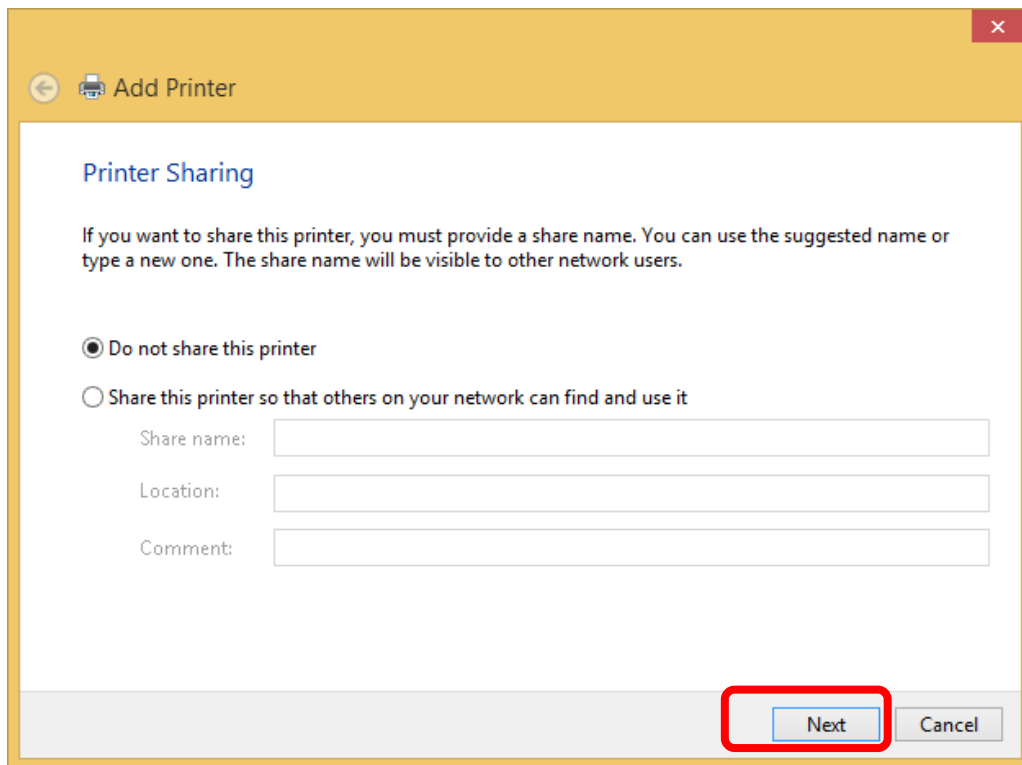
11) Click setup **information** file **In the driver folder**



12 Click **“next”** , click **“finish”**

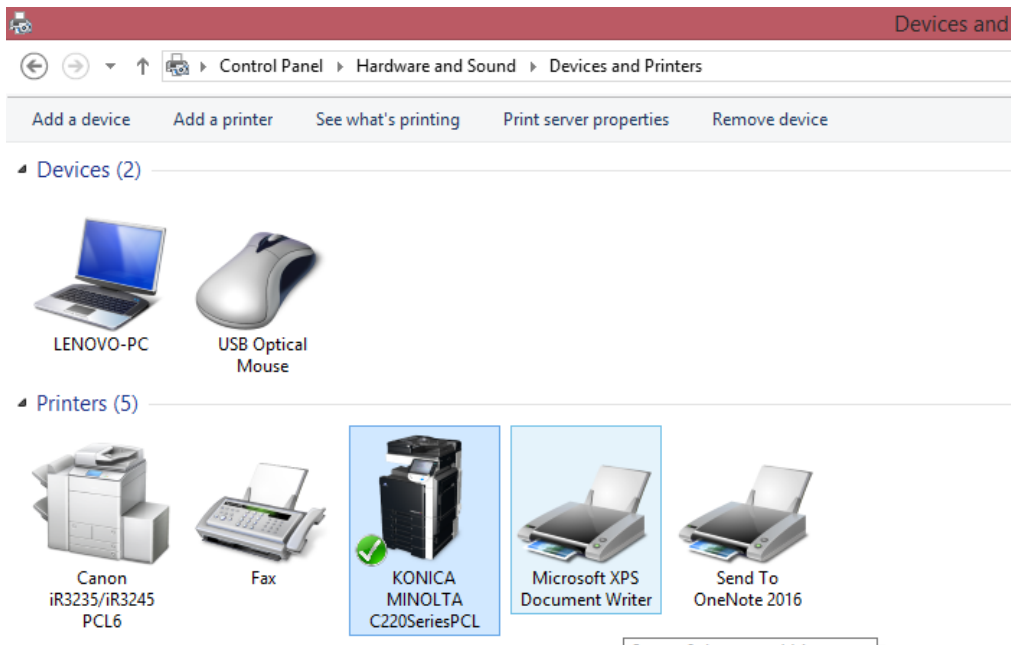


1) Select “do not share”, next.

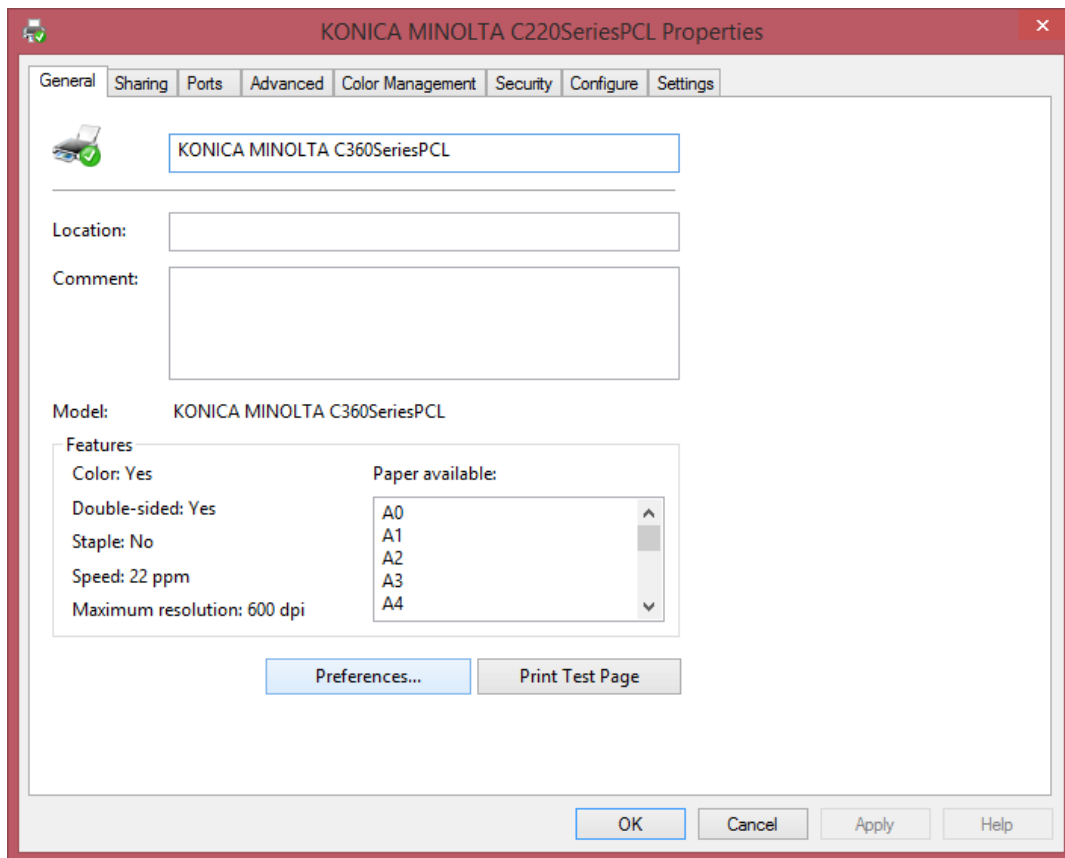


2) Click “Finish”

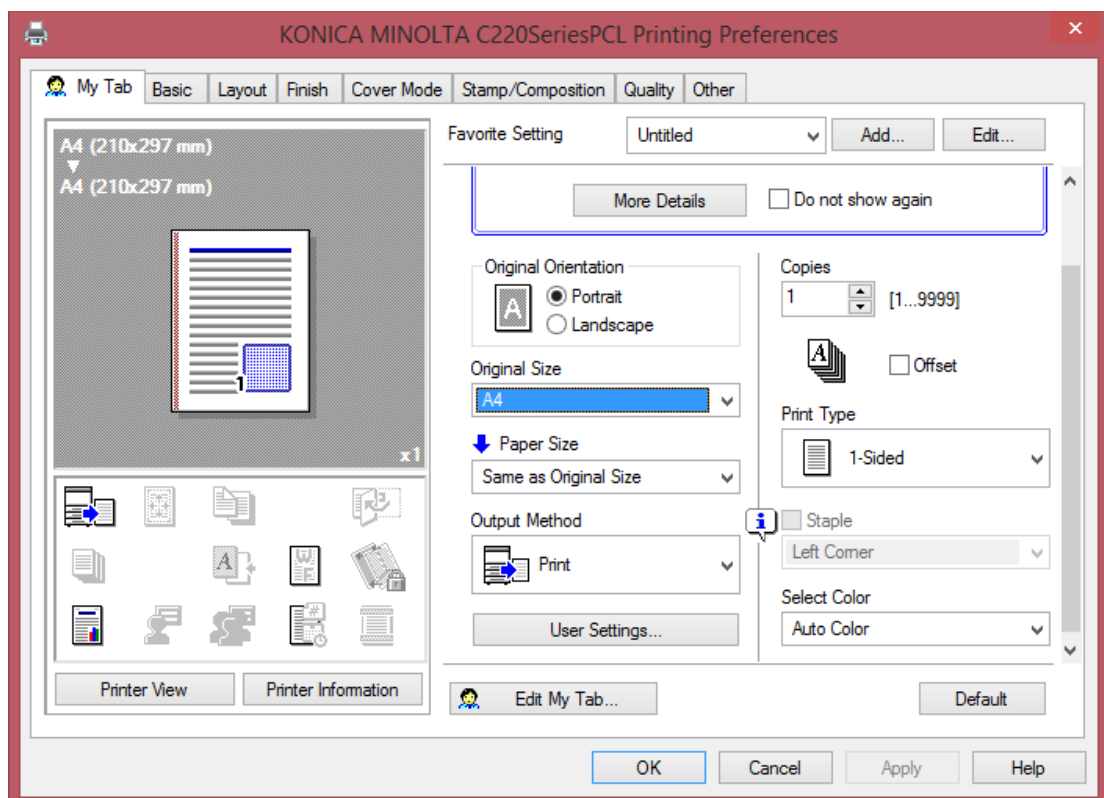
3) Right click at Konica driver and select “Printer Properties”



4) Click “Preferences...”



5) Check the main setting, apply and OK.



- 6) Print Test Page
- 7) If error, please check the IP Address of machine is same.
- 8) Right click at Konica driver, choose printer properties and select “Ports”

