



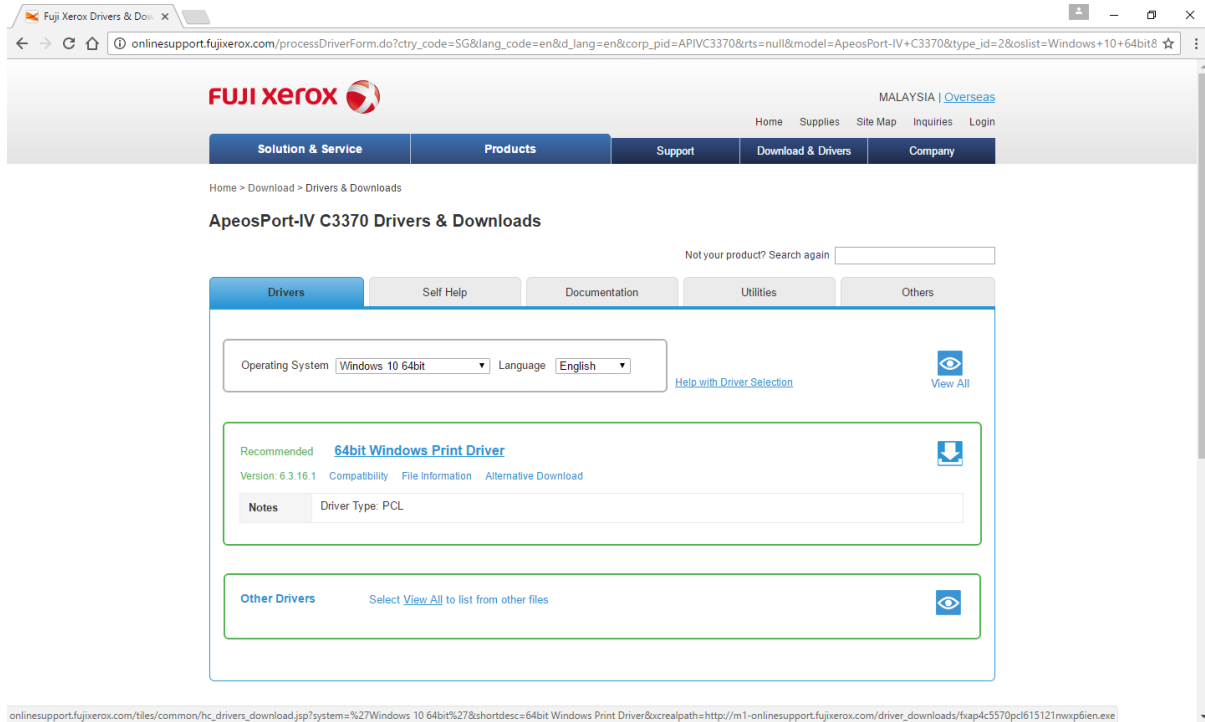
# Manual Guide

## FUJI XEROX

# Printer Setup Guide

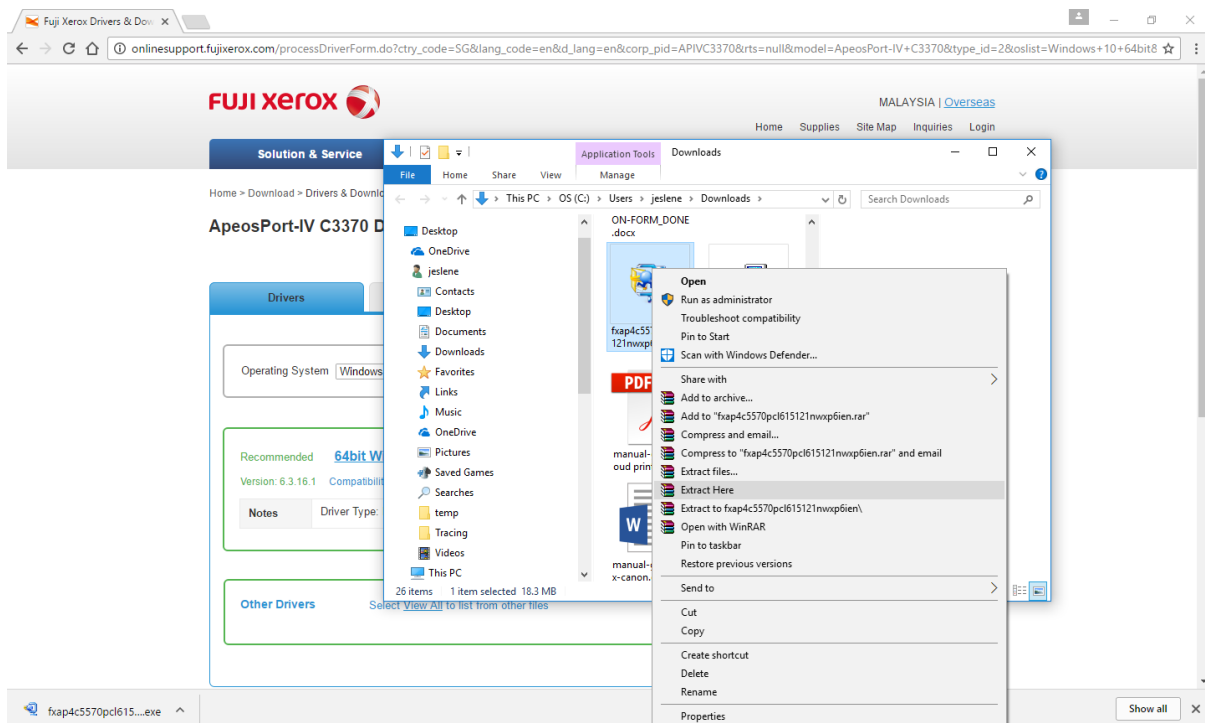
# MANUAL SET UP PRINTING MACHINE FUJI XEROX

1. Download the driver of machine Fuji Xerox ApeosPort-IV C3370
2. Select types of OS Windows
3. Click and download Driver Type PCL



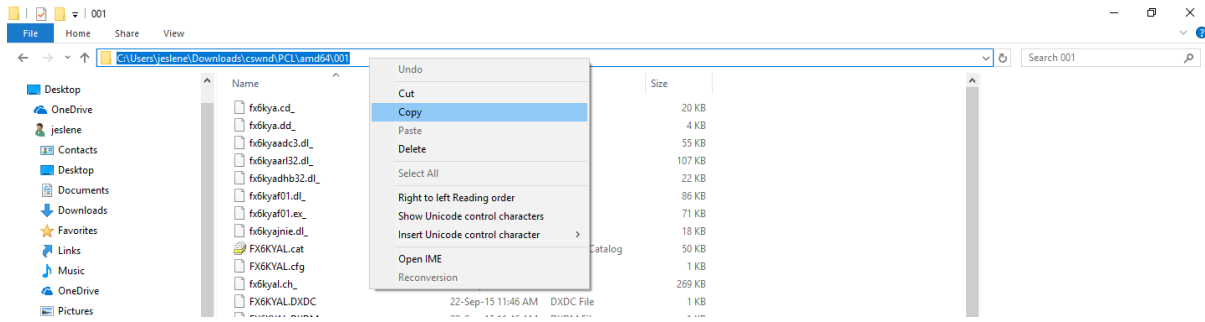
onlinesupport.fujixerox.com/files/common/hc\_drivers\_download.jsp?system=%27Windows 10 64bit%27&shortdesc=64bit Windows Print Driver&xrealpath=http://m1-onlinesupport.fujixerox.com/driver\_downloads/fxap4c5570pcl615121nwxp6ien.exe

4. Right click and Extract the file Drivers

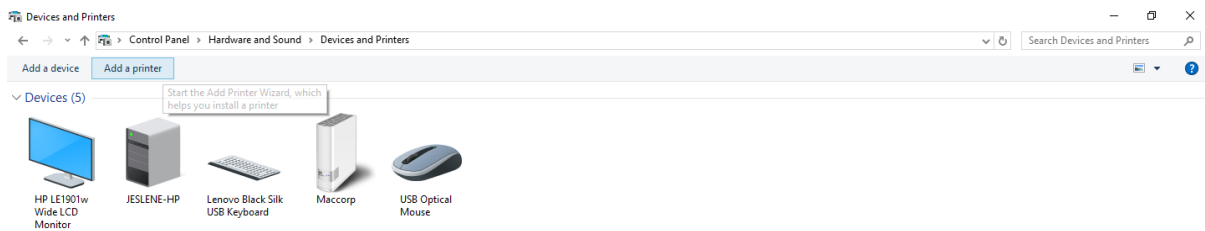


## COPIER2U.MY

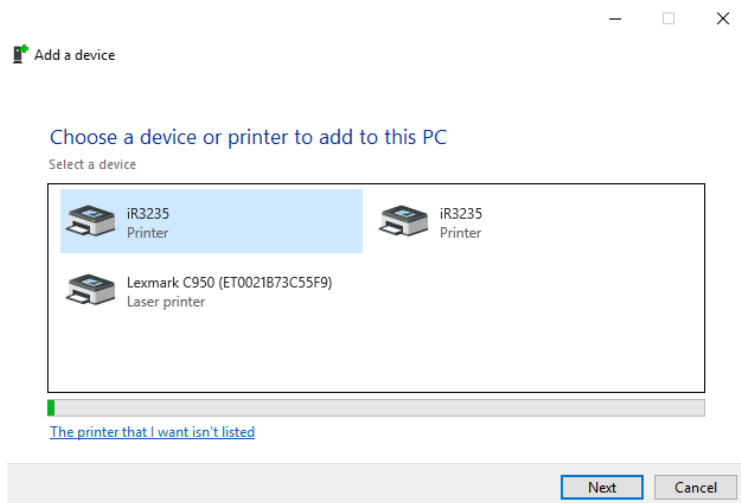
### 5. Copy the address of folders



### 6. Click "Add a printer"

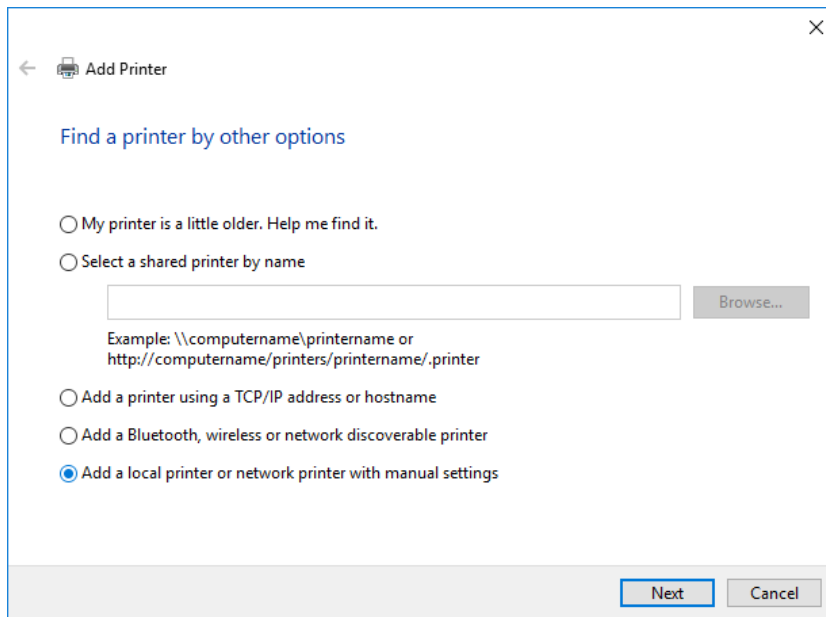


### 7. Choose "The printer that I want isn't listed" and Next

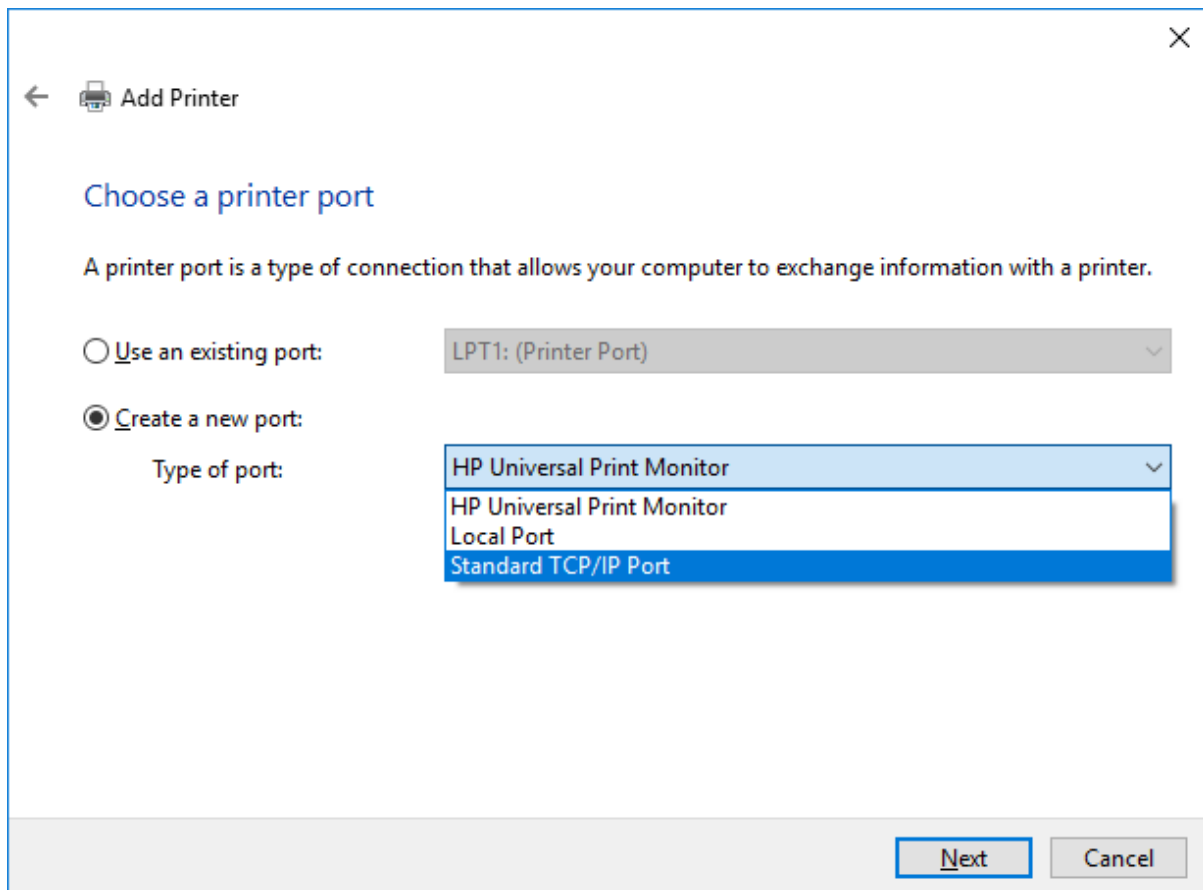


COPIER2U.MY

8. Tick on “Add a local printer or network printer with manual settings” and Next

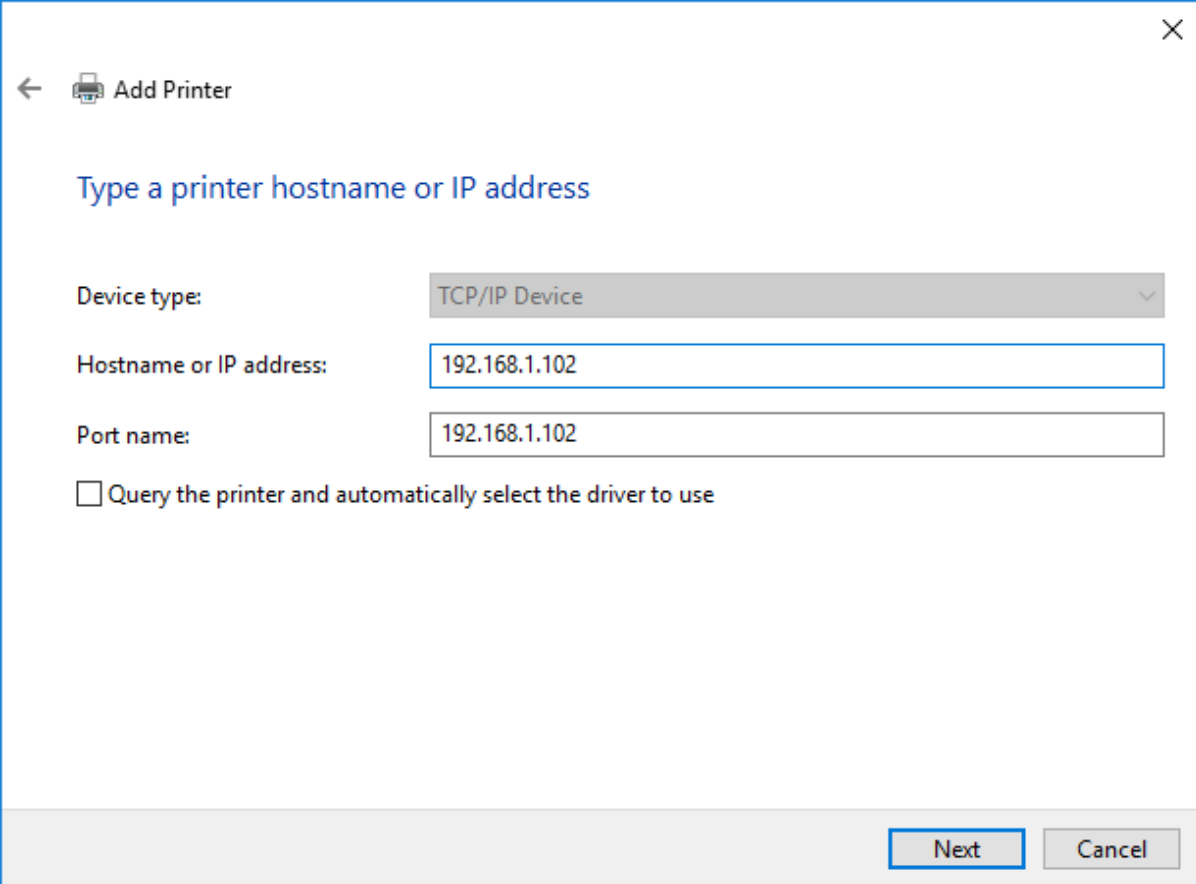


9. Select a Standard TCP/IP Port and Next



COPIER2U.MY

10. Enter the IP Address of machine and “UNTICK” the Query the printer. Then, Next



← Add Printer

Type a printer hostname or IP address

Device type: TCP/IP Device

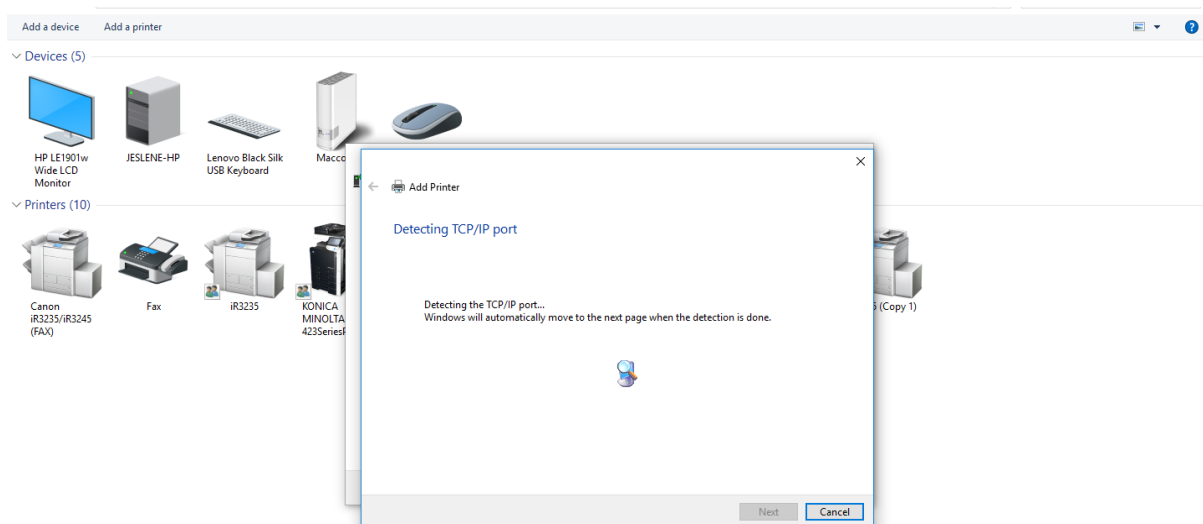
Hostname or IP address: 192.168.1.102

Port name: 192.168.1.102

Query the printer and automatically select the driver to use

Next Cancel

11. Detecting process



12. Click on Browse and “PASTE” the driver location

13. Installation process and DONE

14. Check the paper size, set as default and try Print Test to double check