



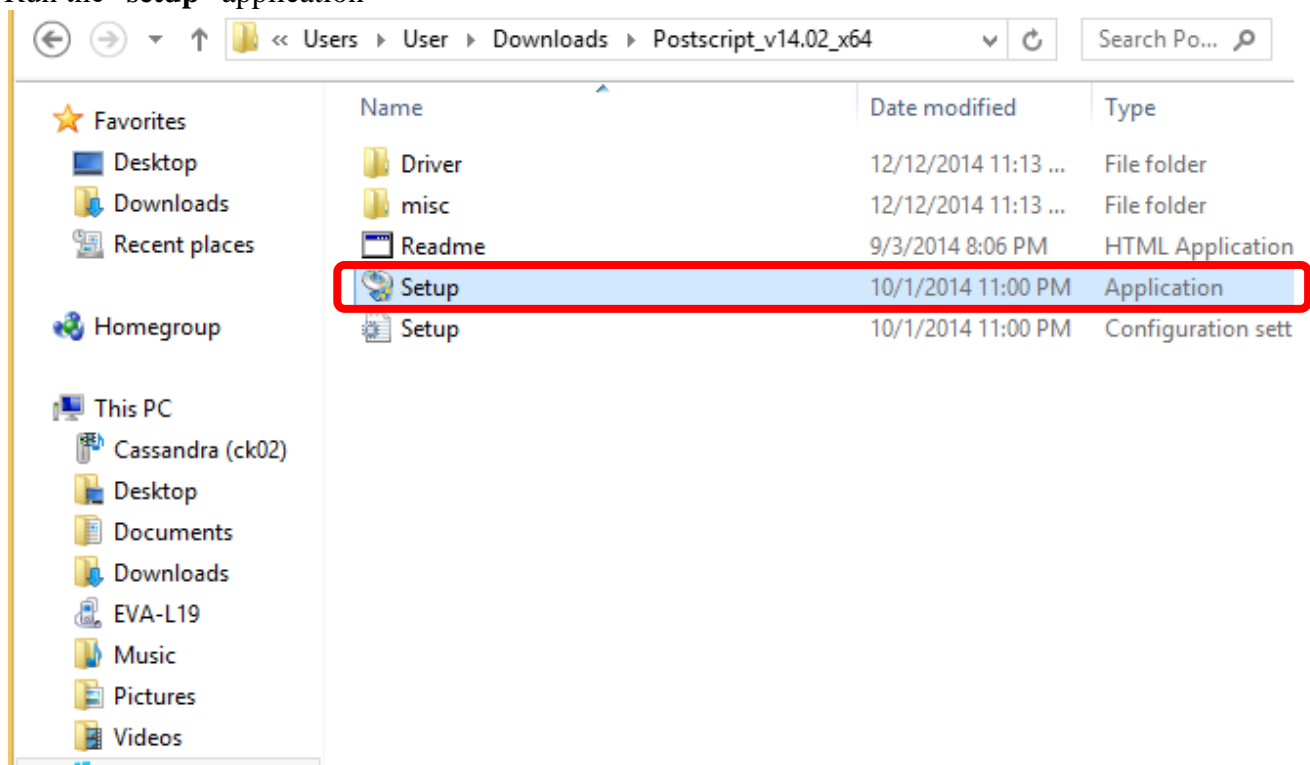
# Manual Guide

## Canon

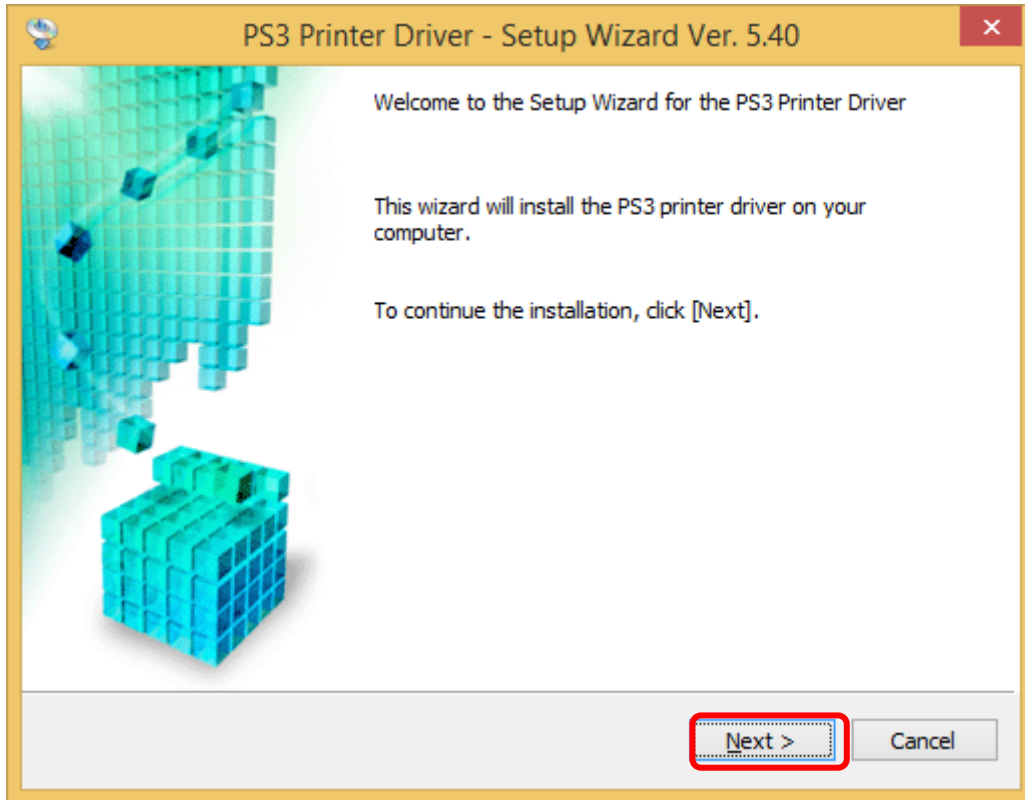
# Printer Setup Guide

## Download printer driver for Windows desktop

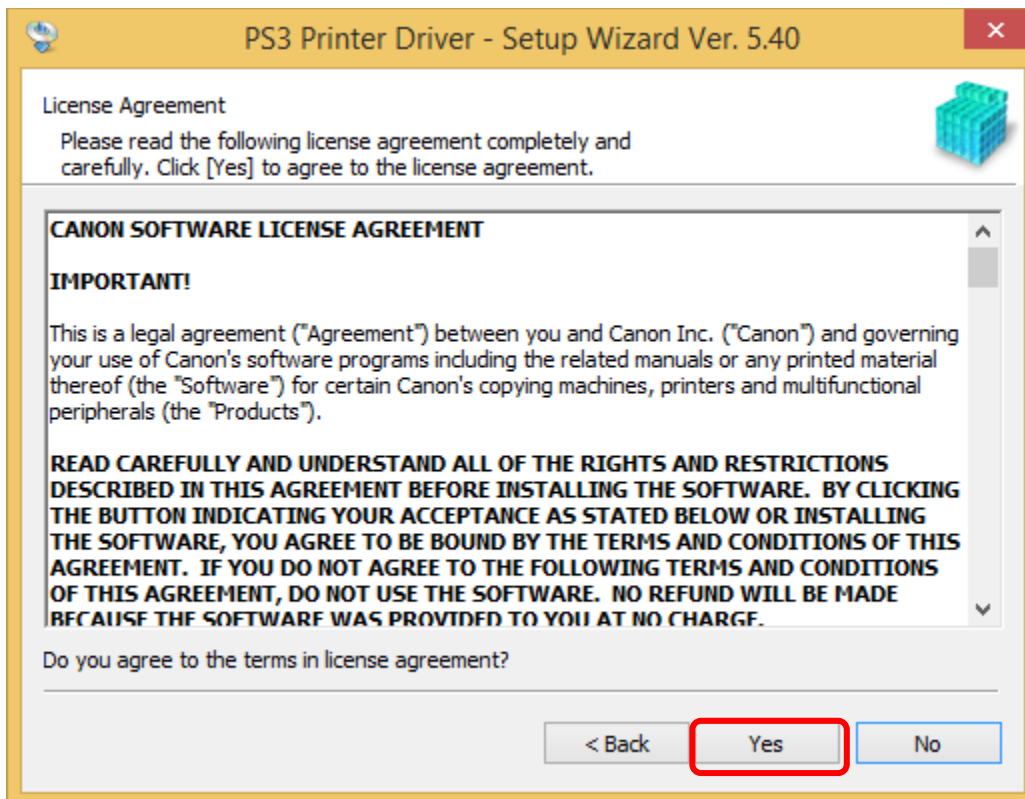
1. Copy and paste URL [http://downloads.canon.com/isg\\_public/Postscript\\_v14.02\\_x64.exe](http://downloads.canon.com/isg_public/Postscript_v14.02_x64.exe) in browser. canon drivers will download automatically
2. Once download, **extract the file**
3. Run the “**setup**” application



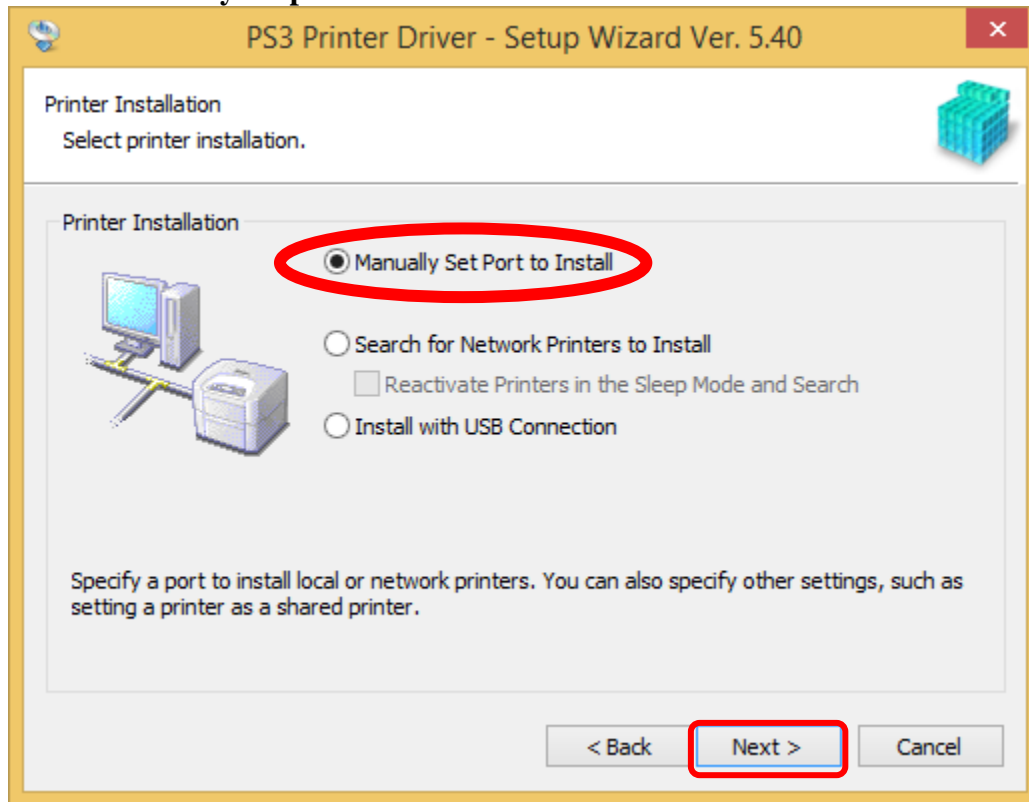
4. Click "Next"



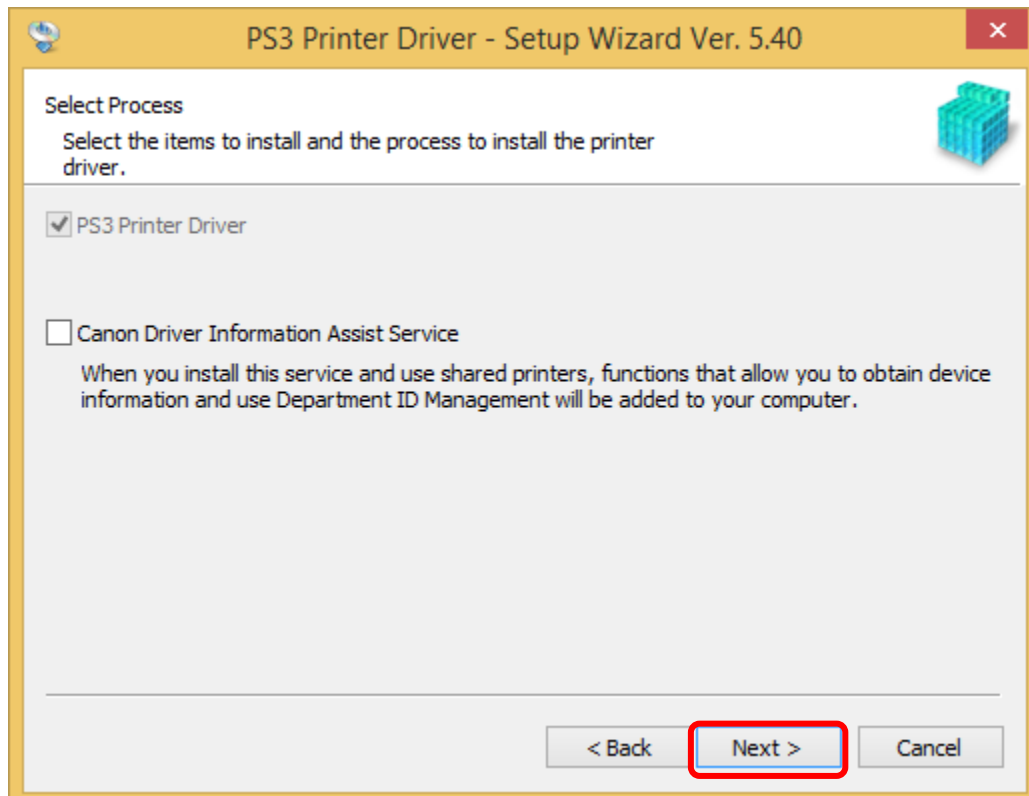
5. Click "Yes"



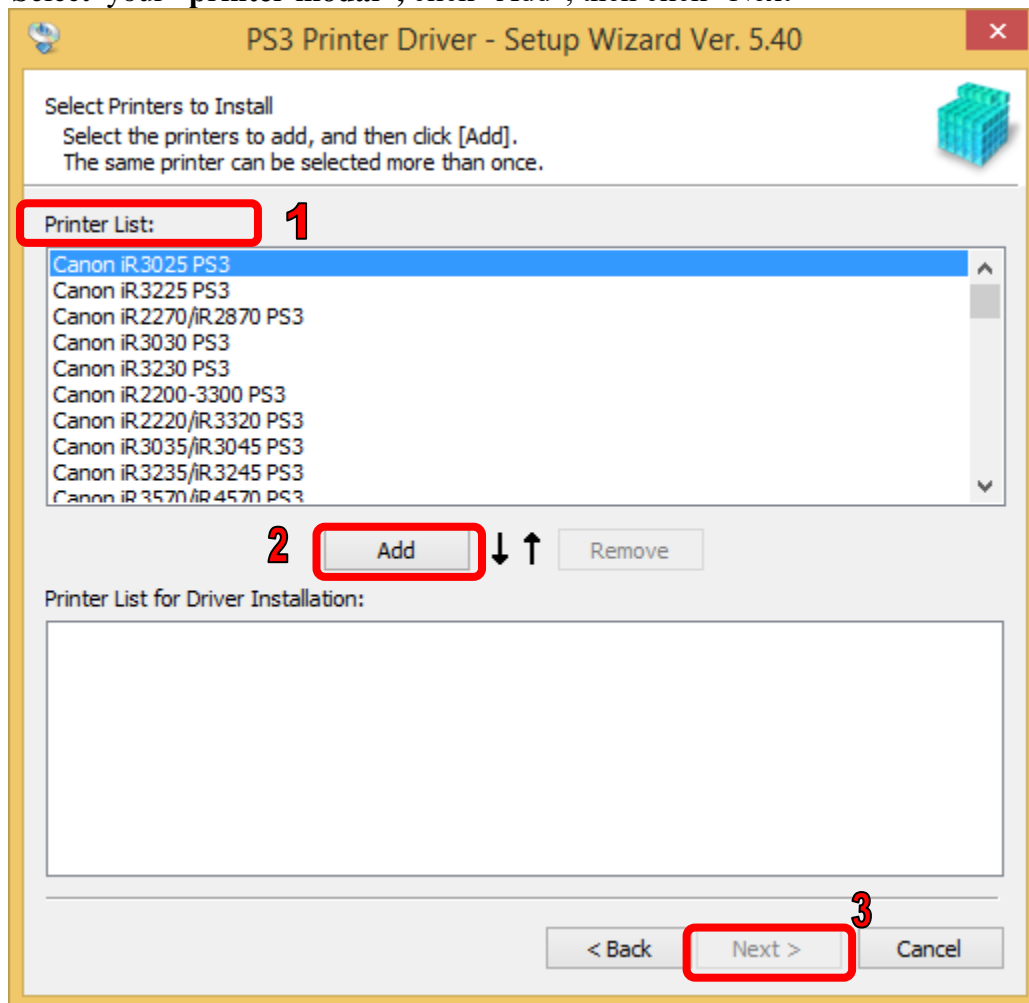
6. Select “Manually set port to install”



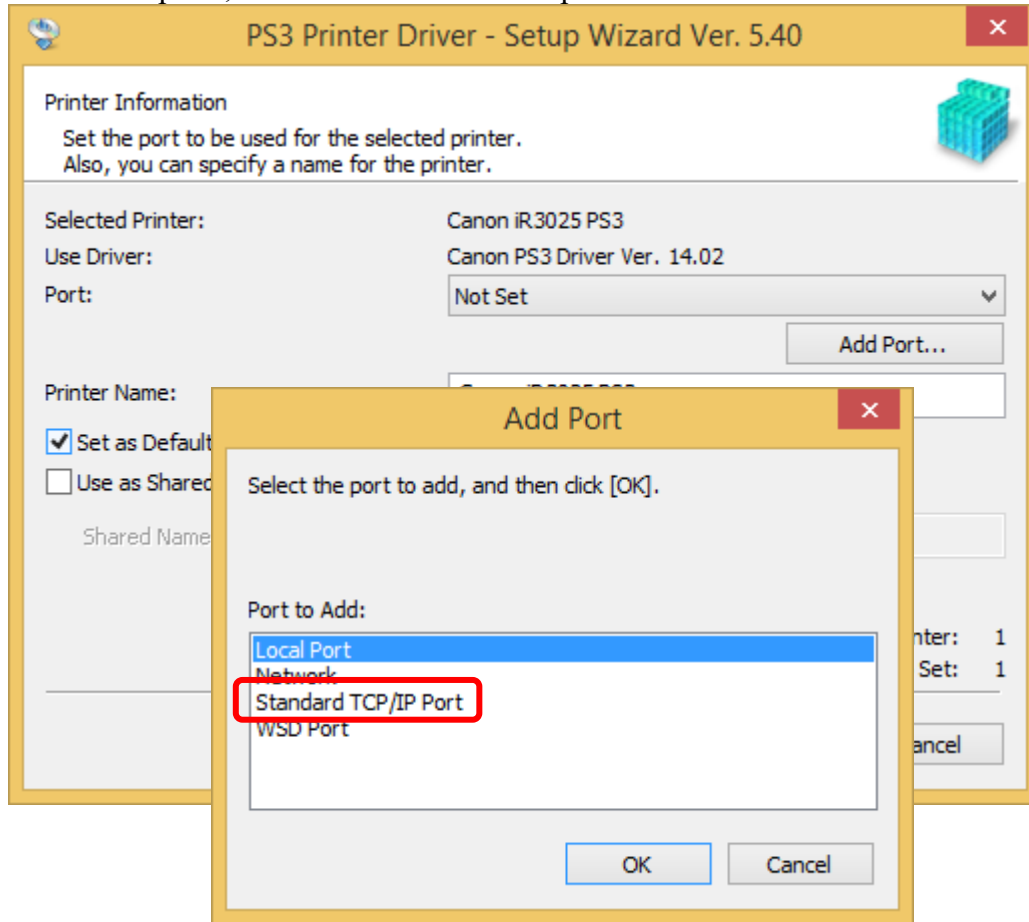
7. Click “Next”



8. Select your “**printer modal**”, click “Add”, then click “Next”



9. Click “Add port”, Select “standard TCP/IP port”



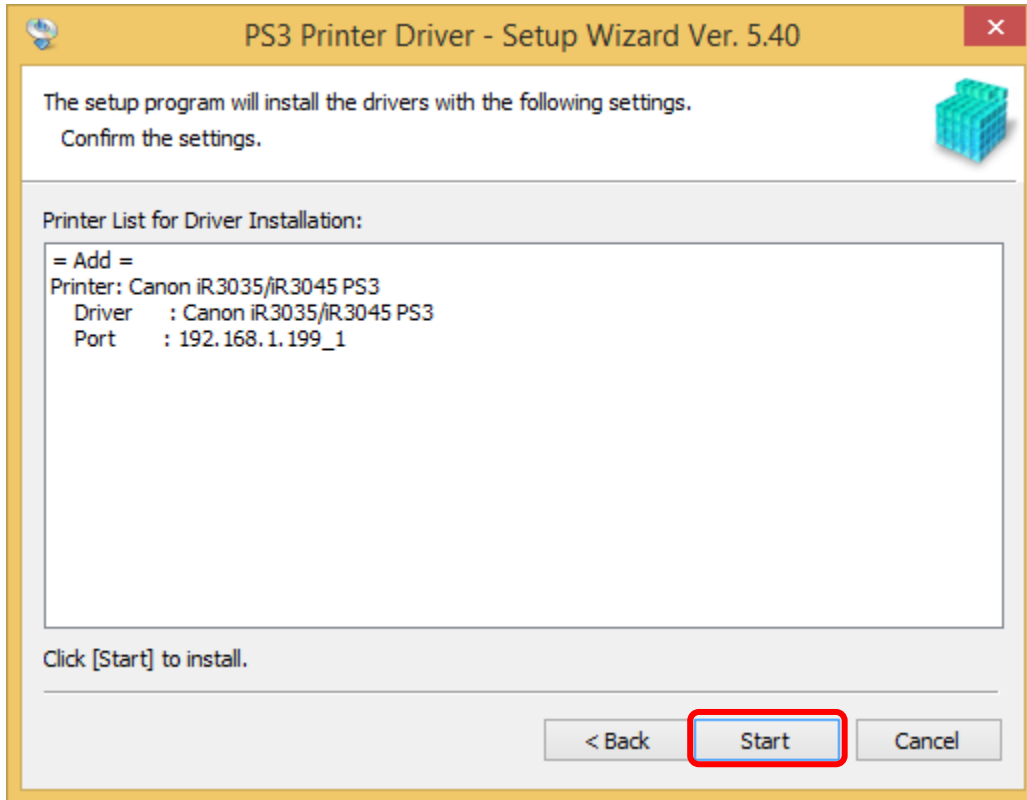
10. Enter the printer "IP address" , when pc auto detect the printer click "Finish"

The screenshot shows a Windows dialog box titled "Add Standard TCP/IP Printer Port Wizard". The main heading is "Add port" with the instruction "For which device do you want to add a port?". Below this, it says "Enter the Printer Name or IP address, and a port name for the desired device." There are two input fields: "Printer Name or IP Address:" and "Port Name:". At the bottom right, there are three buttons: "< Back", "Next >" (which is highlighted with a red rectangle), and "Cancel".

11. Click "Next"

The screenshot shows a Windows dialog box titled "PS3 Printer Driver - Setup Wizard Ver. 5.40". The main heading is "Printer Information" with the instruction "Set the port to be used for the selected printer. Also, you can specify a name for the printer." The fields are filled with: "Selected Printer: Canon iR3035/iR3045 PS3", "Use Driver: Canon PS3 Driver Ver. 14.02", "Port: 192.168.1.199\_1" (with an "Add Port..." button next to it), and "Printer Name: Canon iR3035/iR3045 PS3". There are also checkboxes for "Set as Default" and "Use as Shared Printer", and a "Shared Name:" field. At the bottom right, it shows "Current Printer: 1" and "Number of Printers to Set: 1". At the bottom, there are three buttons: "< Back", "Next >" (highlighted with a red rectangle), and "Cancel".

12. Click “Start”



13. Select “Restart My computer now “ then click “Exit”

